

Historic, Archive Document

Do not assume content reflects current scientific knowledge, policies, or practices.

62.31

LIBRARY
RECEIVED
★ MAR 23 1928 ★
U. S. Department of Agriculture

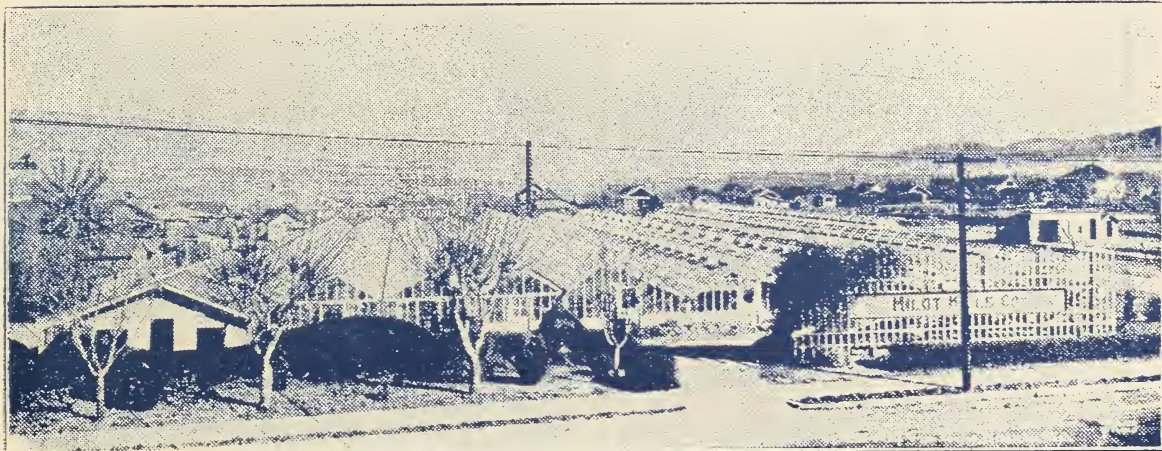
Beautify Your Home
by Planting

Milot-Mills Co.

Ornamental Shrubs, Plants and Seeds

*Our Landscape Department is at Your Service
Twenty Years' Experience in This Section*

CATALOGUE No. 10



PARTIAL VIEW OF OUR GREENHOUSES AND GARDENS

In this catalog you will find listed Shade Trees, Ornamental Shrubs, Evergreens, Vines, Bulbs, Flower Seeds and Early Money Vegetable Plants and Seeds for Truck Gardeners

MILOT-MILLS COMPANY, Inc.

Florists and Seedsmen

WENATCHEE : WASHINGTON

Greenhouses and Nurseries: 607 to 619 Okanogan Avenue
Seed and Cut Flower Store: 22 North Wenatchee Avenue

"Say It With Flowers"

CASH BARGAIN COLLECTIONS

Mention number of collection when ordering. Not more than two collections of one number to a customer. Cash must accompany order.

COLLECTION NO. 1.
BARGAIN COLLECTION OF DAHLIAS
SIX named Giant Flowered Dahlias, our choice. Value over \$3.50, for..... **1.65**
TWELVE named Giant Dahlias, our choice. Value over \$6.00, for..... **4.75**

COLLECTION NO. 2.
FOUR HYBRID TEA ROSES
ONE EACH OF HADLEY, LOS ANGELES, RADIANCE and SOUV. DE CLADIUS PERNET. Value \$3.50. Sent to you delivered for only..... **2.85**

COLLECTION NO. 3.
SIX BEAUTIFUL SHRUBS
This collection contains one each of Golden Bell, Hydrangea, Mock Orange, Bridal Wreath, Snowball, and Weigela. Value \$4.05. Delivered to you for only..... **3.45**

COLLECTION NO. 4.
BARGAIN COLLECTION OF CANNAS
SIX BEST NAMED VARIETIES. Value \$1.00. Delivered to you for..... **.85**
TWELVE CANNAS, two each. Value \$2.00. Delivered to you for..... **1.50**

COLLECTION NO. 5.
COLLECTION OF SIX HARDY PHLOX
PINK, RED, MAUVE, WHITE, SALMON and PINK WHITE EYE. Value \$1.20. They are easily grown and we will deliver them to you for only..... **1.00**

COLLECTION NO. 6.
COLLECTION OF GLADIOLUS
Not Less than Ten different choice, blooming Bulbs. 50 delivered to you for..... **3.50**
Or Fifty General Mixed Blooming Size Bulbs, delivered to you..... **2.50**

COLLECTION NO. 7.
THREE HARDY VINES
ONE TRIUMPH VINE, 1 HONEYSUCKLE, 1 BOSTON IVY. Value \$1.25. (You need vines for shade.) We deliver to you for only..... **1.00**

COLLECTION NO. 8.
COLLECTION OF GERANIUMS
TEN DIFFERENT COLORS and VARIETIES, 2½-in. pots. Value \$1.00. Delivered to you for only..... **.85**
OR FIVE FOR 50c DELIVERED.

COLLECTION NO. 9.
VEGETABLE PLANT COLLECTION
One dozen each Bonny Best Tomatoes, Black Beauty Egg Plant, Ruby King Pepper, Early Cabbage. All hardy transplanted stock. Value \$1.00. Delivered to you for..... **.80**

COLLECTION NO. 10.
VEGETABLE PLANTS
Two Dozen Asparagus Roots, 2 Clumps Rhubarb, 2 Dozen Progressive Everbearing Strawberry Plants. Value \$2.00. Delivered to you for only..... **1.65**

COLLECTION NO. 11.
ASTERS, PANSIES, SNAPDRAGON, ETC.
Two Dozen Choice Asters, 1 Dozen Choice Pansies, 1 Dozen Choice Snapdragons, 2 Ruffle Monster Petunias, 6 Carnations. All well rooted and ready to set in the garden. Value \$2.75. Delivered to you..... **2.00**

COLLECTION NO. 12.
12 CHOICE YOUNG HARDY PERENNIALS
One Hardy Aster, blue; 1 Phlox, 1 Foxglove, 1 Canterbury Bell, 3 Different Delphinium, 1 Anchusa, 1 Oriental Poppy, 1 Hardy Pink and 2 Lily of the Valley. Value \$1.50. Delivered to you..... **1.05**

Terms and Conditions of Sale--Parcel Post Rates

ORDER EARLY.—State how you wish sent, P. P. or Express. All orders sent out within 24 hours. In the event stock is not ready, we back-order same and ship when ready. All orders less than fifty pounds sent P. P.. Always add P. P. "10c for small orders." See Parcel Post rates:

PARCEL POST RATES WITHIN U. S. A. Rates to Canada, 14c per lb. or fraction thereof.	First lb. or fraction	Each add. lb. or fraction
First Zone within 50 miles of Wenatchee.....	7c	1c
Second Zone within 50 to 150 miles.....	7c	1c
Third Zone within 150 to 300 miles.....	8c	2c
Fourth Zone within 300 to 600 miles.....	9c	4c
Fifth Zone within 600 to 1000 miles.....	10c	6c
Sixth Zone within 1000 to 1400 miles.....	11c	8c
Seventh Zone within 1400 to 1800 miles.....	13c	10c
Eighth Zone all over 1800 miles.....	14c	12c

Remittance should accompany every order sent— Checks, Money Orders, or Stamps.

If your order is not properly filled, notify us at once. We substitute unless otherwise notified

GUARANTEE.—While we exercise the greatest care to have all our stock run true to name, however it is mutually understood and agreed to between the purchaser and ourselves, that should any stock prove untrue, we shall in no case be liable for any sum greater than that originally received for such stock that may prove untrue; besides, we will not be responsible for the crop. All orders are booked only under the above conditions.—MILOT-MILLS COMPANY, Inc., Wenatchee, Washington.

VEGETABLE PLANTS

We grow Vegetable Plants by the thousands. We use Northern grown seeds and varieties adapted to this climate. We solicit your order for any quantity. No charge for packing. All orders carefully packed and sent by Parcel Post or Express. Please send cash with order, or satisfactory bank references. (All Seeds Listed at Back of Catalogue.)

Tomatoes

BONNEY BEST EARLY

Scarlet Red—This variety is a vigorous grower; scarlet red. Leading variety. Very early.

MARGLOBE

A new and wonderful tomato, blight resistant. A fine red color and heavy yield.

EARLIANA

Scarlet Red—Very popular and early.

PONDEROSA

Purple Crimson—The largest of all Tomatoes.

JOHN BAER

Bright Red—A fine canning Tomato.

JUNE PINK

The Earliana of the purple varieties.

STONE

The greatest canning Tomato (bright red). Late.

DWARF STONE, OR TREE TOMATO

Largest-fruited of all dwarf Tomatoes. Red.

Transplanted—25c doz; \$1.50 per 100; \$10 and \$12 per 1000. For 5000 or more, write for prices. Any of above Tomato Plants, out of beds, 20c doz; \$1.00 six doz; \$1.25 per 100; \$6 and \$8 per 1000. For 5000 or more, write for prices.

GOLDEN QUEEN

Try a dozen or 100 of these; they are certainly fine. Large golden yellow tomato. 25c per doz.

PEAR-SHAPED YELLOW

Fine for Preserves—Price, per doz. 25c.

YELLOW HUSK, OR GROUND CHERRY

Prepared as preserves, they are unequalled for delicacy of flavor. Very easily grown. Plants 25c per doz; five doz. \$1.00.

Celery

(All Celery are Transplants)

White Plume—Very early white celery.

Golden Self-Blanching—Is a money-maker, producing beautiful golden yellow stalks, very early. The best.

Giant Pascal—A superior keeping sort. The stalks are very large, thick and solid.

Prices of Above—25c per doz; \$1.00 for 5 doz; \$10 per 1000; Seedlings, per 1000, \$3.50.

Celeriac, or Turnip-Rooted Celery, 25c per doz.

Pepper, or Mango

IMPROVED RUBY KING

The standard home and market sort.

CHINESE GIANT PEPPER

A very large, sweet pepper. Mid-season.

WORLD-BEATER

A fine, large, sweet pepper.

PIMENTO PEPPER

The handsome fruit is thick-fleshed and firm. A heavy cropper.

HOT PEPPERS, RED CHILI AND CAYENNE

Early and enormously productive. Very hot. The above plants: 25c per doz; \$1.50 per 100; \$12 per 1000. Special price on 5000 or more.

Cauliflower

Early Snowball—Large solid heads. A sure cropper.

Dry Weather Giant—A good variety for our climate

Transplants, 25c per doz; \$1.50 per 100; \$10 and \$12 per 1000.

Out of beds, 20c per doz; \$1 per 100; \$8 and \$10 per 1000.

THOUSAND HEADED KALE

Excellent for the table and for poultry greens.

Transplants: 25c per doz; \$1.50 per 100. Out of beds: per doz. 20c.

Cabbage

COPENHAGEN MARKET CABBAGE

The best early round headed Cabbage. Stands longest without bursting. Plants ready March first and on.

Golden Acre—New Cabbage. Ten days earlier than Copenhagen, and a little smaller. A money-maker.

Prize Jersey Wakefield—Pointed head.

Early Winningstadt—Pointed head.

LATE CABBAGE

Late Dutch Flat—Large, flat-headed late cabbage.

Danish Ballhead—A large round-headed cabbage. Any of the above cabbage plants, out of beds, 20c per doz; \$1.00 per 6 doz; \$6.00 per 1000. Write for prices on larger quantities.

Transplants—25c doz; \$1.50 per 100; \$10 per 1000.

RED CABBAGE

Plants, 25c per doz.

BRUSSELS SPROUTS

25c per doz; \$6.00 and \$8.00 per 1000.

PARSLEY PLANTS

10c each; per dozen \$1.00.

MINT

Spearmint—Each 10c; per dozen \$1.00.

CHIVES

For flavoring. Per clump, each 25c.

HORSERADISH

Nice roots, each 25c.

SAGE

Per clump 35c.

EGG PLANT

Tree or High Bush—A splendid egg plant. Fruits are borne well above the ground. Transplanted plants, 25c dozen.

Improved New York Purple—Very large, smooth, dark brown color.

BLACK BEAUTY

The fruit is broad and thick, of most attractive form and of the finest flavor. Price, 25c per doz; \$1.00 for five dozen; \$1.75 per 100; \$12.50 per 1000.

Watermelon, Cucumber, Cantaloupe and Tomato Plants, out of pots: Per doz. 75c. By the 100, \$5.

ONION PLANTS

Bermuda Onion Plants—Grow your onions the new way from young plants. Easy to handle. Better than seeds or sets. You will be more than satisfied.

Bermudas and Crystal Wax—200 plants 50c; 500 plants \$1.50; 1000 plants \$2.00; 6000 plants \$10. Guaranteed to grow.

SWEET POTATO PLANTS

Nancy Hall and Yams—25c per doz; \$1.50 per 100; \$12.50 per 1000.

ASPARAGUS

Asparagus Roots—A splendid vegetable. Is very easily grown in any garden. Once planted you always have it. 35c per doz; \$2.00 per 100. Write for prices on large quantities.

Washington Rust Proof—One of the best. Fine flavor.

RHUBARB, OR PIE PLANT

Myatt's Linnaeus—It is an early, tender variety. Superior quality—25c and 35c each.

Tobacco Plants—25c per doz; \$1.00 per 5 doz.

GRAPES

We recommend the following grapes for this section:

Concord—Black, each 25c to 35c.

Moore's Early—Each 35c.

Warden—Black. Very large. Each 35c.

Agawama—Red, very hardy. Each 25c.

Tokay—Red, large. Each 50c.

Muscat—White. Each 50c.

Niagara—White, medium. Each 35c.

Cheaper by the Half Dozen or More.

STRAWBERRIES

Mastodon—Never before such a berry as the Mastodon Strawberry. Best for the garden or field culture. Easily grown. Needs no special care or soil. Largest of any known everbearer. Bears three crops instead of one from one planting. Price 95c dozen; 50 for \$2.00; 100 for \$3.75.

Progressive Everbearer—40c per doz; \$3.00 per 100; \$18.00 per 1000.

St. Regis Everbearing Raspberry—Very prolific till frost. 15c to 25c each; \$1.50 to \$2.50 per doz.

Le France Giant Everbearing—25c each.

PLANTING TABLE PER ACRE

Tomatoes—Planted 3x4 feet.....	3600 per acre
Cabbage—Early, 2x3 feet.....	7260 per acre
Cabbage—Late.....	6000 per acre
Peppers—2x3 feet.....	7260 per acre
Egg Plant—2x3 feet.....	7260 per acre
Cauliflower—2x3 feet.....	7260 per acre
Celery—1x3 feet.....	14520 per acre
Sweet Potato—2x4 feet.....	5600 per acre
Strawberry Plants—2x3 feet.....	8000 per acre

TIME FOR PLANTING

Early Cabbage, Cauliflower and Rhubarb, March to May 31. May and June for the following: Celery, Tomatoes, Peppers, Egg Plant, Sweet Potato Plants, Asparagus, Melons.

BEDDING PLANTS BRIGHTEN YOUR HOME WITH MILOT-MILLS FLOWERS

Alyssum or Carpet of Snow—Dandy for borders; a pure snow white or lilac. 10 each; \$1.00 per dozen. Out of flats, 5c each; 60c dozen.

Ageratum Floss Flower—Blue perfection; a fine bedding plant. 60c per dozen.

Acroclinium Everlasting—Double mixed. 60c per dozen.

Amaranthus—Brilliant red foliage. Three feet in height. Thrives best in hot, sunny location. Two varieties to offer. 60c per dozen.

Globe Amaranth—An everlasting flower. 60c per dozen.

Bellis Daisy—Very double, white Daisy; fine for border. 60c per dozen.

Centaurea Gymnocarpa (Dusty Miller)—White-leaved; used in boxes, baskets and borders. 10c each; \$1.00 per dozen.

ASTERS

Aster Plants of the following varieties in separate colors. 40c per dozen.

Early Wonder—Earliest of all. Pink and white.

Queen of the Market—White, pink, purple, lavender and rose.

Giant Comet Aster—Pink, crimson, light blue, royal purple and white, borne on long stiff stem.

Beauty Aster—Azure blue, carmine, lavender, purple and white. Late bloomer and fine lasting quality.

Giant Crego Aster—Lavender, rose pink, and white. Large fluffy aster, extensively grown.

Mixed Colors—30c per dozen. All transplanted plants, 3 to 4 in. high.

Sunshine Asters—Blue, pink and lilac. One of the most attractive novelties and anemone flowered. 50c dozen.

Fire Ball Aster—A most brilliant dwarf aster. 35c dozen.

King Aster—Mixed colors. In form, the flowers are entirely distinct from any other variety. 35c dozen.

Carnation Giant Marguerite—The Chabaud and Marguerite flower early, are ever-blooming up to frost. 5c each; 60c per dozen.

Candytuff Umbrellata—A delicate shade of rosy lavender; fine for cutting. Per dozen, 60c.

Candytuff—White. Per dozen, 60c.

Chrysanthemum Coronarium—Double. 60c per dozen.

Cosmos—Fine for cutting; comes in very early. Pink and white. Per dozen, 60c.

Carnation Plants—We have then in red, pink, and white. Out of pots—per dozen, \$1.50.

Coleus—Large, bright colored leaves. Assorted. 10c, 15c, 20c each.

Chinese Forget-Me-Not—A new plant from China. 12 to 18 inches tall; fine to cut. 5c each; 60c per dozen.

Small-Leaf Coleus—Fine for baskets and border. 15c to 25c each.

Dianthus Garden Pinks—The best variety of colors to be had. Per dozen, 60c.

Euphorbia (Snow of the Mountain)—Fine for bedding. 60c per dozen.

Fuchias—Storm King, Black Prince and Trailing Queen. 25c each.

Lobelias—Dwarf, single blue; fine for bordering. 5c and 10c each; 60c and \$1.00 per dozen.

Lobelia—Trailing blue. For baskets, etc. 60c per dozen.

Marguerites—Common. 15c to 25c each.

Marguerites, Madam Sander—Large double. 15c to 25c and 35c each.

Heliotrope—Fragrant. A splendid bedding plant. You should try it. Each 25c.

SPECIAL GIANT PETUNIA

Diener's Ruffled Monster Petunia—The largest and most beautiful Petunias in existence. Have taken first prize wherever exhibited. Plants in 3-in. pots, 25c each. Colors: Pink, red, giant white, pink glory, red with black center.

Petunias—Double. A splendid assortment in white, pink, purple and blotch. Each 15c and 25c.

Purple Plume Grass—For borders. 30c per dozen.

MARIGOLDS

Dwarf Legion of Honor—Striped in color. Per dozen, 60c.

French Dwarf—Per dozen, 60c.

New Lemon Queen—Giant African; immense flower. 60c per dozen.

New Orange Queen—Giant African, immense flower. 60c per dozen.

Calendula (Pot Marigold)—Very large, double flowers of a dark orange-red. Per dozen, 60c.

Mimosa (Sensitive or Humble Plant)—15c each.

Nemophida (Baby Eye)—Beautiful blue border plant. 60c per dozen.

Pansies—Choice, 60c per dozen. Special choice, 75c per dozen.

Phlox Drummonds—Mixed colors. 60c per dozen.

Myosotis (Forget-Me-Nots)—Each 10c to 25c.

French Marguerites, or Painted Daisies—Daisylike flowers of many bright colorings. 5c each; 60c per dozen.

Swan River Daisy—A charming little plant, light blue; flowers are produced in great profusion. 5c each; 60c per dozen.

Castor Oil Bean (Ricinus)—Semi-tropical plants, grown largely for their picturesque foliage. 4-in. pot. Each 20c.

Santanelia—A dwarf silvery gray plant, 6 inches. Fine for formal border. 10c each; \$1.00 dozen.

Lantanas—Always in bloom. Pink. 25c each.

Oxalis, White and Buttercup—An excellent little plant for pots. 25c each.

Statice Sinuata—Blue. Fine for drying. 5c each. 60c per dozen.

Salvia Splendens—Scarlet flowers; continuous bloomers. 10c each; \$1.00 per doz; from boxes per dozen, 60c.

Ten Week Stocks—White, pink, lavender, red and mixed colors. 60c per dozen.

Viola Cornuta Papilo—Tufted Pansies; a beautiful butterfly violet blue Pansy. 60c per dozen.

Verbena Mammoth—Color shade in blue, white, pink and scarlet make an effective bedder. Out of pots. 75c per dozen.

Verbenas—Mixed from boxes. 60c per dozen.

NEW GIANT ZINNIAS (DAHLIA FLOWERING)

Exquiset—Tyrian rose color.

Old Rose—Real rose; fine.

Golden State—A beautiful yellow.

Crimson Monarch—A real giant.

Oriole—Immense orange.

Dream—Large deep lavender.

Polar Bear—White.

Giant Attraction—Immense; brick red.

Illumination—Tyrian rose.

Scarlet Flame—Large, bright red.

Meteor—Dark red.

Buttercup—Immense, deep yellow.

Canary Bird—Large, delicate primrose.

Nice Transplanted plants—5c each; 60c dozen. Mixed colors, 50c per dozen.

Wallflower Single—Extra early Paris; a very exquisite flower for backgrounds. 60c per dozen.

ANTIRRHINUM, OR SNAP DRAGON

Purple King.

Maralde—Light copper.

Philadelphia Pink.

Daphne—Red.

Amber Queen

Mont Blanc—White.

Golden King.

Defiance—Scarlet.

Copper King.

Brilliant Scarlet

Pot Plants—10c each; \$1.00 per dozen. Out of boxes, 60c per dozen. They are fine.

Did it ever occur to you that a collection of plants makes a most appropriate birthday gift, or for any occasion? Try it!

BEGONIAS

Rex Begonias—Assorted. 25c and 50c each.

Angel Wing Begonia—Spotted leaves. 15c to \$1.00 each.

Begonia Chatterlain—Pink; always in bloom. 15c to \$1.00 each.

Large Leaved Flowering Begonia—25c to 50c each.

Begonia Verone—25c each.

Begonia Semperflorens (Gracilis Luminosa)—A beautiful plant in fiery red and rose shades. 25c each.

CACTUS

Xmas Cactus—25c each.

Giant Flowering Cactus—Red. 50c each.

GIANT PANSIES

We make a specialty of choice Pansies and our collection contains the finest varieties now in cultivation. In bloom, 60c per dozen; Special 75c per dozen.

Celosa Cristita (or Giant Coxcomb)—Dwarf; very shown and stands hot weather. 60c per dozen.

Celosa Childsii (Chinese Woolflower)—The flowers are ball-shaped and resemble a ball of wool. Color is vivid red. Plants, 5c each; 60c per dozen.

Celosa—Giant Pampus. Exquisite red; 4 feet tall. 5c each; 60c per dozen.

Celosa—New Giant. Many exquisite colors. 5c each; 60c per dozen.

Feverfew—An old garden favorite with dark green finely cut foliage, throwing up clusters of pure white double flowers. 15c to 25c each.

Cuphia Platycentra (Cigar Plant)—Grows twelve inches in height. Scarlet flower. 20c each.

Geraniums

Apple Blossom—Fine pink.

Cibiel—Single salmon pink.

Meteor—Single, brilliant crimson and maroon.

Mad. Buckner—Double, white flowers.

Hartman—Rose shade, very double.

Ivy Geranium—Deep rose. Fine for porch boxes.

Jean Viaud—Bright, clear mauve-pink. Very large trusses.

Henry F. Mitchell—Fine double red; very large.

Palmer—Red with white eye, large, single, exquisite, rank grower.
 Poitevine—Salmon pink, double.
 Ricard—Semi-double, bright vermillion.
 S. A. Nutt—Double, rich crimson sort; very popular.
 Dispot—Reddish purple.
 Hall Cain—Single pink.
 Martan—Single pink.
 Col. Gillan—Single; purplish red.
 Frego—Salmon pink; single.
 Marquis De Carlioline—Red; semi-double.
 Red Wing—Double; good red.
 Queen of the Whites—Large, single flower.

PELARGONIUMS

(Martha Washington Geraniums)

Easter Greeting—Everblooming.
 Princess May—Very large, pink.
 Rose Bard—A beautiful shade of pink.
 Crimson King—Intense crimson.
 Lucy Becker—Rose, pink, blotched maroon.
 Real Pansy Geranium—Pansy shaped flowers.
 Scented Leaved Geraniums—Rose and oak-leaved.
 Pelarosa—New; bright pink flowers.

Prices of Geraniums Listed Above:

Out of 2½-in. pots, 15c each; \$1.50 per dozen.
 Out of 3-inch pots, 20c each; \$2.00 per dozen.
 Out of 4-inch pots, 35c each; \$4.00 per dozen.
 Out of 5-inch pots, 50c each.
 Out of 6-inch pots, 75c each.

SPECIAL

Our selections on Mixed Geraniums—
 Out of Pots.....10 for \$1.00

Cannas

LARGE FLOWERING CANNAS

"Supreme" Quality

CULTURE—Cannas should be planted in good, rich garden soil, mixed with half of old rotten stable manure.

Red Shades—Green Foliage.

Charles Henderson—4 ft. Brilliant crimson.
 Pennsylvania—6 ft. Overlaid orange.
 The President—4 ft. Flaming scarlet.

Varigated Flowers—Green Foliage

Kate Gray—6 ft. Orange carmine.
 Apricot—Buff yellow and salmon pink.

Large Flowers—Bronze Foliage

King Humbert—Scarlet. Great favorite.
 Wyoming—Beautiful orange.

Pink Shades—Green Foliage

Mrs. Alfred Conrad—Salmon pink.
 City of Portland—Fine, large, shell pink.

Yellow Shades—Green Foliage

Florence Vaughan—5 ft. Yellow, spotted crimson.
 Yellow King Humbert—4 ft. Orchid yellow.

Giant Foliage Variety

Gigantum—8 ft. Bronze foliage.
 Colossal—8 ft. Green foliage.
 Price of above Cannas: 20c each; \$2.00 per dozen;
 \$15 per hundred.

MIXED CANNAS

All Leading Varieties—Prices: 15c each; \$1.50 per dozen; \$12 per 100.
 Be sure and plant Cannas for they do splendidly in this country.

Gladiolus Bulbs

For your benefit we have listed a new collection of named sorts of exquisite color, all blooming, sizes and true to name.

Anna Eberius—Brilliant, beautiful purple. Each 10c; dozen \$1.00.
 Byron L. Smith—White, lavender pink orchid. Each 15c; dozen \$1.50.
 Circe—Exquisite light blue, darker at edge. Each 15c; dozen \$1.50.
 Crimson Glow—Deep scarlet red, one of the best scarlets. Each 10c; dozen \$1.00.
 Dorothy McKidden—A beautiful peach blossom pink stripe. Each 10c; dozen \$1.00.
 Dutchess of York—Extra fine dark blue. Each 10c; dozen \$1.00.
 Early Snow—Strong, pure white. Each 10c; dozen 75c.
 E. J. Shaylor—A popular rose pink. Each 10c; dozen 75c.
 Elizabeth Tabor—Delicate rose pink on white ground. Each 15c; dozen \$1.50.
 Flora—Clear yellow, strong, many flowers. Each 10c; dozen 75c.
 Glory of Kinnsmerland—The only true rose colored; a beauty. Each 10c; dozen 75c.
 Gold Measure—Large yellow flowers with crimson circle. Each 10c; dozen \$1.00.
 Goliath—Pansy purple, very early. Each 10c; per dozen 75c.
 Gretchen Zang—Vinaceous pink, shaded lighter. Each 5c; dozen 60c.
 Helen Franklin—Ruffled white and purple flower. Each 5c; dozen 60c.
 Lily White—The earliest white. Each 5c; doz. 60c
 Louise—A very popular lavender. Each 10c; per dozen 75c.
 Mrs. F. Pendelton—Deep rose pink, shaded to pale pink. Each 5c; dozen 60c.
 Mrs. Watt—Glowing American Beauty shade Each 10c; dozen 75c.
 Niagara—Yellow, speckled lavender; a beauty. Each 10c; dozen 75c.
 Pink Perfection—Beautiful large pink. Each 15c; dozen \$1.50.
 Pride of Hillegon—Fine spike, scarlet red. Each 10c; dozen 75c.
 Red Star—Dazzling blood red. Each 15c; dozen \$1.50.
 Rose Ash—Ashes of Rose, large. Each 10c; per dozen 75c.
 Mary Pickford—Creamy white, lemon lips. Each 10c; dozen \$1.00.
 Scarlet Princept (or Virginia)—Large; one of the best, early. Each 10c; dozen \$1.00.
 One Bulb each of the bulbs listed above for \$1.95 CASH.
 Gladiolus—Mixed variety. Dozen 50c and 75c.

Hardy Lily Bulbs

Lillium Rubrum, or Red Lily.
 Lillium Auratum—The gold banded lily of Japan.
 Regal Lillium—A new white, very hardy. Fall prices. Dormant bulbs, 50c each.
 St. Joseph Lily—White. 50c each.
 Started in pots for Spring planting, 75c each.
 Lily of the Valley—Pips. 10c each; \$1.00 dozen.

ADD POSTAGE

Dahlias

CACTUS DAHLIAS

- Attraction—Giant flower. Pink. 75c each.
 Candeur—Splendid white. 35c each.
 Chas. Sherwood—Light red, fine cut flower. 50c each.
 Country Girl—Beautiful golden yellow, suffused with salmon rose. 50c each.
 Conquest—Immense flower, crimson. 40c each.
 Chipeta—Mammoth flower. Amaranth. 40c each.
 Clara Seaton—Enormous blooms of a pretty shade of red gold and bronze. 50c each.
 Cacelia—50c each.
 F. Graham—Salmon rose. Giant Cactus. 60c each.
 Golden West—Immense flower, deep rich yellow and orange. 35c each.
 Jupiter—Variegated. 35c each.
 Lorna Doone—Unusual pink. Beautiful cut flower. 40c each.
 Tom Lundy—Giant Cactus. Bright velvety red. 60c each.

- Gen. Pershing—Pure white. 40c each.
 Graphic—Maroon tipped with white. 40c each.
 Countess of Lonsdale—Color: amber. Fine cut flower. 25c each.
 Liberty Bond—A blending of buff, bronze and salmon. Very large flower. \$1.00.

DECORATIVE DAHLIAS

- Autumn Queen—Reddish bronze and yellow. 20c each.
 Pink Decoration—Light pink. 20c each.
 Jack Rose—Dark red. 20c each.
 Crimson Bedder—Crimson. 15c each.
 Snowball—Pure white. 15c each.
 Freda Norman—Amber. 25c each.
 Rosala Style—Columbia pink. Large. 50c each.

PEONY DAHLIAS

Large Peony Flowering Dahlias.

- Aristo—A large white. 50c each.
 City of Portland—Largest of all yellow Dahlias. \$1.00 each.
 Coccine—Red. 25c each.
 Glorious—Tints of cinnamon, apricot and buff. 60c each.
 Dominique—A grand variegated one. 60c each.
 Ida V. Warner—Giant, pink. 50c each.
 John Williams—Large golden copper. 35c each.
 James Gill—Bright, rich orange, marked with scarlet. Giant in size. 50c each.
 Kimono—Large, red and yellow. 75c each.
 Mondsheibe—Large deep yellow. 50c each.
 Max Byrenstrum—Large fine lavender. 40c each.
 Mrs. Carl Salbeck—Large, pink. 50c each.
 Mrs. G. Gordon—Large cream. 35c each.
 Soldier Boy—Khaki reversed rose. Very popular. Price \$1.00.
 Phenomina—Fine high pink. 35c each.
 Queen Esther—Enormous red. 60c each.
 Lavender Queen—Immense lavender. 50c each.
 Minnehaha—A large flowering red. 50c each.
 Wasco Beauty—Giant Cactus Peony; bronze red, tipped with yellow. Handsome. 50c each.
 Liberty—Enormous, salmon-scarlet. 75c each.
 Van Dyke—Large, pink. 75c each.

SPECIAL!

- A splendid collection of named Dahlias, our choice 6 for \$1.75; 12 for \$3.00 cash.
 Ballet Girl, H. C.—Immense, orange petals, edged white. Price, each 75c.
 Brilliant, D.—Hybrid show. Fiery scarlet. Price, 35c each.
 Garnet King, P.—Gigantic flowers of rich garnet. 50c each.
 Squanto, P.—Reddish violet, growing redder at the base. Price, 35c each.
 Sunstar, P.—Bright rosy crimson. 35c each.
 The Swan, Col.—Pure white flower. 35c each.
 Walter Deegan, C.—Intense, rich, fiery scarlet. 35c each.
 Mina Burgle—Dec. Red. 35c each.
 Mixed Dahlias—All kinds. Special, 10 for \$1.00.

BULBS FOR FALL PLANTING

- Tulips, Hyacinths, Daffodils, Crocus, Snow Drops, Narcissus.

Hardy Perennials

- Aconitum (Monk's Hood)—Beautiful blue. Two shades. 20c each.

AUBRIETIA

- 7230 Large Flowered Hybrids—The beautiful mauve Spring bedding plant makes the garden so gay in the early months of the year. Aubrietias produce great masses of bloom. Colors: light lavender rose to dark blue. 25c each; \$2.50 per dozen; small plants, \$1.00 dozen.
 Anchusa—A very hardy, vigorous growing plant, with large spikes of bright blue flowers. You should have it. 25c and 50c each.
 Bellas (or English Daisy)—60c per dozen.
 Long-Spurred Columbine—10c each; \$1.00 dozen.
 Coreopsis—Hardy plants. The flowers are large, rich golden yellow daisies; 2 or 3 feet. 35c and 50c per clump.
 Campanula (Bellflower Canterbury Bell)—Blue, white and pink. Old-fashioned hardy plants, easily grown. 1 year old, 25c each; 2 year old, 50c each.
 Dianthus (or Garden Pink)—A hardy perennial. 75c per dozen.
 Digitalis (Fox Glove)—An old-fashioned plant. White, purple and pink. 15c each; large, 75c ea.
 Delphinium (Giant Hybrid)—Giant spikes of blue and lavender. 25c and 50c each.
 Delphinium (Belladonna)—Beautiful light blue, 25c and 50c each.
 Delphinium (Chinese)—15c to 35c each.
 Bellamosea Globe Thistle—15c each.
 Gypsophila (Baby's Breath)—The flowers are valuable for bouquet making, either fresh or dried. Roots, 25c and 50c each.
 Golden Glow (or Rudbeckia)—Yellow flowering plant that should find a place in every garden, lawn and park. 25c and 35c each.
 Hardy Asters—Tall flowering, stately plants, which bloom very late, usually after first frost, when other flowers are about gone. Lavender, white and blue. 25c and 50c each.
 Helenium (Sneezewort)—These desirable perennials succeed in almost any soil. The flowers are splendid for cutting. Yellow and bronze. 25c to 50c each.
 Hemerocallis Flava (Yellow Day Lily)—Blossoms of deep lemon-yellow, flowers in June and July. Fragrant. 50c each.

Hollyhocks—Separate colors, white, pink, yellow and red double. Out of pots, 20c each.
Iberis (Perennial Candytuft)—Dwarf evergreen plants, 6 to 10 inches, covered with blooms in Spring and early Summer. Excellent for rockeries. 35c each.

GERMAN IRIS

Iris—They are perfectly hardy and thrive anywhere. Colors are blue, white, yellow, lavender and tan. 35c each.

Iris Germanica—The "Fleur de Lis" of France, with exquisite, haunting fragrance; second only to the Peony in perennials. Capable of establishment in any kind of soil, they will attain greater perfection of growth and flowering in a damp or marshy situation.

Archeveque—New, rare color, deep purple violet. 85c each.

Eldorado—Old gold and purple, large. 85c each.
Isoline—Lilac and mauve; beautiful. 85c each.

Mine Chereau—Lavender, pink mottled all over, creamy white. 30c each.

Sans Souci—Fine yellow gold and mahogany brown. 30c each.

Kochi—Claret purple, very handsome. 85c each.
Buttonhole Blue—35c each.

Lavender Pearl—35c each.
Blue White—35c each.

Clear Yellow—35c each.
Japanese Lantern Plant—Each 15c to 35c.

Lily of the Valley—For outdoor planting in shady places. Pips, 10c each.

Poppy, Iceland—Hardy, mixed. 15c
Poppy, Oriental—Hardy perennials, producing immense flowers in gorgeous red. 25c and 50c each.

Pyrathrum Hybridum—This grand old fashioned hardy perennial is easy to grow in any good garden soil. Large daisies, in bright shades. 10c each; \$1.00 per dozen.

Peas—Hardy perennial climber. Splendid cut flowers. Red, white and pink. 25c each.

Statice Latifolia (see Lavender)—Masses of clear mauve flowers that can be dried. 2 year, 50c each; 1 year, 20c each.

Shasta Daisy—Large clumps. 35c and 50c each.
Sweet William—Well known, free blooming. Per dozen, 50c.

Tritoma Pfizerii (Red Hot Poker, Flame Flower, or Torch Lily; the Ever-Blooming Flame Flower)—35c to 50c each.

Sweet Violet Plants—Each 15c; clump 75c.
Veronica (Speed Well)—Spikes of beautiful amethyst blue. 15c and 20c each; \$2.00 per dozen.

Yucca (Adam's Needle)—A majestic plant, especially fine for producing tropical effects. \$1.00 each.

Peonies—Fine hardy plants. They are at home in any climate or soil. Three shades of pink; three different whites; one red kind; one crimson and cream. 50c, 60c and 75c each.

Phlox—Hardy perennial. Is one of the show features of our nurseries. Colors are bright salmon pink, cherry red, deep purple, salmon red and white. 20c to 35c each.

HARDY OUTDOOR CHRYSANTHEMUMS

The following will furnish an abundance of flowers from August until heavy frost. Five following varieties:

- A. Barham—Bronze; incurving.
 - Normandie—White.
 - Firefly—Reddish bronze; very early.
 - Golden Queen—Large, pure golden yellow.
 - Hardy Pink—Very free flowering.
- Prices of above: 15c each; \$1.50 per dozen.

Shade and Ornamental Trees

- White Birch—6 ft. \$1.50.
- Cut Leaf Birch—4 to 5 ft. \$2.50 each.
- Catalpa—6 ft. \$1.00 each.
- Carolina Poplar—6 ft. 1.00 each; 8 to 10 ft. \$1.50 to \$2.50 each.
- American Elm—10 ft. \$1.50 each.
- Siberian Elm—A most desirable tree for this section. 8 to 10 ft. \$2.50 each; 6 to 8 ft. \$1.75; 5 ft. \$1.00.
- Hackberry—6 ft. \$1.50 each.
- Silver Maple—\$1.00 and \$1.50 each.
- Norway Maple—\$1.00 and \$1.50 each.
- Flowering Crab—\$1.00 each.
- Purple Leaf Plum—Handsome form with rich purple leaves. 4 to 6 ft. \$1.00 to \$2.00 each.
- Scarlet Hawthorne—5 ft. \$2.50 each.
- American Chestnut—4 to 5 feet. \$1.25 each.
- Prunes (Triloba)—2 to 3 ft. 75c each.
- Black Locust—6 to 10 ft. \$1.00 to \$2.50 each.

Hardy Vines

- Virginia Creeper—Very vigorous grower. 50c and \$1.00 each.
- Ampelopsis Vietchii, or Boston Ivy—Rapid grower. Fine for covering brick chimneys, stone and cement walls. Each 35c and 50c.
- Trumpet Creepers—Most handsome of all cultivated species, blooming profusely with long scarlet trumpet flowers, in the late summer when no other vines are in bloom. Special price, 3 year stock, 75c each.
- Kudzu Vine—A rapid growing vine. Out of pots. 25c each.
- Hop Roots—25c each.
- English Ivy—Strong roots, out of pots. 35c each.
- Hall's Japan Honeysuckle—Fragrant flowers pinkish yellow, rapid grower. 35c and 75c each.
- Heckrottii—Orange scarlet flowers, ever blooming and very fragrant. 75c each.
- Wisteria—Chinese purple. 50c each.
 (Look under Rose list for Vining Roses)

ANNUAL VINES FOR PORCH BASKETS AND WINDOW BOXES

- Parlor Ivy—Rich green leaves, very rapid grower. 20c each.
- Kenilworth Ivy—A charming trailing plant, especially adapted for hanging baskets and porch boxes. Each 20c.
- Maderia Vine—A popular old fashioned vine, strong plants. 25c each.
- Smilax—A dainty vine, having a tendency to climb up. 25c each.
- Trailing Musk—In both green and variegated leaves. Trails downward. 20c each.
- Vinca, Variegated—A lovely trailing vine with large glossy leaves of green and white. 20c to 35c each.
- Vinca—Plain green, large leaves, blue flowers. 20c and 35c each.
- Trailing Lobelia—Blue flower. 10c each.
- Moon Vine—Large white flowers. Very fast grower for covering of porches. 20c each.
- Cobea Scandens—A cup and saucer vine. Growing 30 feet in one season. Covered with thousands of blue bell shaped flowers. 20c each.

LARGE FLOWERING CHRYSANTHEMUMS

- Pollworth—Yellow. 25c each.
 - Early Snow—White. 25c each.
 - Unaka—Lavender. 25c each.
 - Rosarie—Pink. 25c each.
- Large flowering Chrysanthemums can be grown outside till frost, then taken inside, disbudding to make large flowers.

Hardy Shrubbery

For Landscape Planting, suitable for this section. We are always pleased to help you make a proper planting.

- Almond Double Flowering—Pink. Very early. Price \$1.00 to \$1.50 each.
- Almond Double Flowering—White. Very early. Price \$1.00 to \$1.50 each.
- Althea Bush—Large, handsome flowers. Bloom late in summer. Price \$1.00.
- Amorpha—Flowers violet purple in clustered racemes. Price 75c.
- Barberry Thunbergi—Three years. Price 25c to 50c. Discount on large quantities.
- Buckthorn—Tall, twiggy bush, dark green leaves and white flowers. Price 85c.
- Calycanthus (Sweet Scented Shrub)—An old favorite. Flowers are rich dark crimson. Delicious perfume. 50c and 75c each.
- Caragana—Yellow, sweet, pear shaped flowers. A tall grower. Price 50c.
- Cornus Stolonifera—Red bark. White flower. Is very decorative. Price 50c each.
- Cotoneaster—Low shrub, dark green leaves, pinkish white flowers, red fruit, attractive in rockeries. Price \$1.00 to \$1.50 each.
- Duetzia Rosea—Double rose flower. Dense, quick grower. Price 50c.
- Deutzia (Pride of Rochester)—Shrub. White flowers. Price 75c each.
- Desmodium—Purplish red flower. Late fall. 75c ea.
- Elder—Finest golden leaved shrub. Flowers and fruit. Price 75c each.
- Forsythia Fortunei—These splendid old shrubs, with masses of yellow, flower very early in the spring. 75c each.
- Honeysuckle (Bella Albida)—White. 60c each.
- Honeysuckle (Bella Rosea)—Dense growing dwarf pink flower. Price 50c each.
- Honeysuckle (Tartarian)—Tall red. Price 75c ea.
- Honeysuckle (Tartarian)—Tall pink. 75c each.
- Honeysuckle (Tartarian)—Tall white. 50c each.
- Hydrangea Arborescans (Hill of Snow)—Late blooming. Very attractive. Price 50c to \$1.00 each.
- Hydrangea, P. G.—Large cluster of flowers. Price 75c to \$1.50.
- Kerria, Japanese—Double yellow, a very desirable shrub. 75c each.
- Lilac—Darkest. Price \$1.50 each.
- Lilac—Single white. Price 75c to \$1.50 each.
- Lilac—Persian purple. Price 50c to 75c each.
- Lilac (Syringa)—Common white. Price 50c to \$1.50.
- Lilac (Syringa)—Persian white. Price \$1.50 each.
- Lilac (Marie Le Graye, S.)—Very fine, pure white. Price \$1.50 each.
- Lilac (Sen. Volland, D.)—Rosy red. \$1.50 each.
- Privet Hedge Plants—The very best variety is what we offer. Price \$8 to \$12 per hundred.
- Prunes Triboli—Pink flowering plum. \$1.50 each.
- Pearl Bush (Grandiflora)—Hardy, pure white flowers in clusters on light wiry branches. \$1 each.
- Quince (Japanese)—Bright red flower; very early. Price 75c each.
- Snowball—Very handsome, ball shaped flowers. Price 75c and \$1.00 each.
- Snowberry Red—Covered with red berries most all winter. Price 75c each.
- Snowberry White—Twenty-four inches tall, with snow white berries. Price 75c each.
- Spirea Anthony Waterer—Dwarf, bushy, spreading type. Rosy crimson. Price 50c to \$1 each.
- Spirea Douglassi—Deep red flowers. 75c each.
- Spirea Opulifolia Golden—Golden foliage, making

- a fine contrast in a planting. Price 75c each.
- Spirea Thunbergia—Dense, fluffy bush. Flowers pure white, borne in feathery masses in the early spring. Price 50c and 75c each.
- Spirea Van Houttei—The grandest of all Spirea and one of the best of all shrubs. A complete fountain of pure white blooms. Price 35c to 75c, \$1.00 and \$1.50 each.
- Syringa Avalanche (or Mock Orange)—The flowers are numerous, creamy white and very fragrant. Price 75c each.
- Syringa Golden—Golden leaf shrub. 75c each.
- Bouquet Blanche—Dwarf growth with long slender branches, densely covered from base to top with double sweet scented flowers of creamy white. Price 75c each.
- Syringa (New Virginia)—One of the most beautiful new ever blooming varieties. It is pure white, sweetly scented. Price 75c each.
- Tamarix (African)—Fine feathery foliage, usually pink flowers in loose panicles. Price 50c to \$1.00
- Tamarix (Hispidia)—Ever blooming Tamarix. \$1.00
- Wiegela Abel Carrier—Rose carmine flowers with yellow spot in throat. Price 75c each.
- Wiegela Eva Rathke—Deep flowers, carmine red. Price 75c to \$1.00 each.
- Wiegela Floriunda—Perfuse bloomer, dark pink. Price 75c each.
- Wiegela Roses—Early flowering, rose color. 75c.
- Wiegela Variegated—Leaves margined and streaked creamy white. Flowers pink. Price 75c each.
- Snow Ball Bushes—Sweet scented snowball, clusters of pinkish white flowers and dull green foliage. Price \$1.00 each.
- Virburnum (Dentatum)—Bushy shrub with heart shaped leaves, bright green fading with rich tones of purple and red. Clusters of white flowers. Price \$1.00 each.
- High Bush Cranberries—Hardy shrubs with spreading branches and flat clusters of white flowers. Scarlet berries. Price 75c each.
- Virburnum (Opulus Sterile)—Hardy shrubs with showy clusters of flowers globular in shape. Very popular. Price \$1.00 each.
- Virburnum (Japan Snowball)—The choicest of its class. Pure white, ball shaped clusters of flowers in May. Price \$1.00 each.

Rose Bushes

We make a specialty of hardy field Roses. The following varieties we have tried and found to be a very good selection for North Central Washington. Careful pruning at the proper season, sufficient water and fertilizer, with a good protection of such material as dry straw in winter, will give a wealth of beauty and bloom in summer.

- Bessie Brown, H. T.—Ivory blossom, large. 75c ea.
- Sensalur, H. T.—Rich Red, free bloomer. 75c ea.
- Roselandice, H. T.—Yellow rose, opelan sport. 75c
- Hergonis—The Golden Rose of China. 65c each.
- Admiral Ward—Crimson red, shaded fiery red and velvety crimson. 75c each.
- Annie Laurie—Brilliant salmon pink, vigorous grower. \$1.00 each.
- Angelus, H. T.—A fine cut flower, white. 50c each.
- American Beauty, H. P.—Color rich red, passing to crimson. 75c each.
- Arthur R. Goodwin—Copper color mixed with orange red. 75c each.
- Betty, H. T.—The flowers are very fragrant, large and exquisite coloring being copper with golden yellow. 60c each.
- Black Prince, H. P.—Deep crimson, large, full and globular. 75c each.
- Clara Watson—Flesh tinted rose-peach, large and fragrant. 75c each.

Clio—A vigorous grower, producing handsome foliage, flowers of flesh color. 60c each.

Columbia—Large rose, nearly thornless, pretty peachblow pink. Two-year, \$1.00 each.

Constance—Buds streaked with crimson. Large globular flowers, yellow coloring. \$1.00 each.

Commonwealth—Large double flower, deep pink, continuous bloomer. \$1.00 each.

Crusader, H. T.—Velvety Crimson. 75c each.

Duchess of Albany, H. T.—Deep colored pink and very beautiful. 60c each.

Edel, H. T.—Pure white ivory base. 60c each.

Edith Part, H. T.—Rich red suffused with deep salmon and copper yellow. 60c each.

Edward Mawley, H. T.—Deep crimson, large size, perfect form. 60c each.

Eldorado—Golden yellow, slightly tinted red, large and very fragrant. 75c each.

Flores, H. T.—Salmon to rose shade. \$1.00 each.

Frau K. Druschki, H. P.—Pure snow white with long pointed buds. 60c and 75c each.

General McArthur—Bright scarlet. 75c each.

George Arends—Brilliant pink. 75c each.

George Dickson, H. T.—Velvety black crimson; very large. 75c each.

Gold Mine, H. T.—Golden yellow with orange-bronze heart. \$1.00 each.

Gruss an Teplitz, H. T.—Brightest scarlet-crimson, profuse and very hardy. 75c each.

Hadley, H. T.—Deep velvety crimson. 75c each.

Harry Kirk, T.—Yellow and fragrant. 75c each.

Hoosier Beauty, H. T.—Deep crimson with darker shadings. \$1.00 each.

Hortulanus Fret, H. T.—Apricot yellow. 75c each.

Jon J. L. Mock, H. T.—A large everblooming Rose, light pink to cherry red reversed side of pettale. A winner. 60c each.

Juliet—Golden outside petals and rose to crimson inside. \$1.00 each.

Kaiserin Augusta Victoria—Creamy flowers of immense substance. 75c each.

Lady Hillingdon—Orange yellow; beautiful. Price 60c each.

Los Angeles, H. T.—Vigorous, luminous flame-pink, pointed buds. 75c each.

Mme. Butterfly, H. T.—Tight buds, are a lovely shade of Indian oak yellow. 75c each.

Mme. Cecile Brunner—Salmon pink. Best miniature roses. 75c each.

Mme. Caroline Testout—Clear, bright satiny pink. 75c each.

Mrs. A. R. Darlington, H. T.—Creamy white. Price 60c each.

Mrs. A. R. Waddell—Copper-scarlet buds, deep reddish flowers. 75c each.

Mme. Edouard Herriott—Coral-red, shaded with yellow and rosy scarlet. 75c each.

Miss Lolita Armour—Free blooming, orange and copper hues. 75c each.

Mrs. Aaron Ward—Center Indian yellow, with edge primrose. 75c each.

Ophelia, H. T.—Salmon flesh, shaded rose. 60c and 75c each.

Paul Neyron—Deep rose, immense size. 60c each.

Prince Bulgaria, H. P.—Copper pink. 50c each.

Radiance Pink, H. T.—Brilliant rosy opaline pink. 60c each.

R. M. Henrietta, H. P.—An old favorite, red, very hardy. 60c each.

Rose Marie—Always covered with large blooms. Rose red. 75c each.

Rose Dawn, H. T.—New, long pointed buds. Soft rose flesh with yellow base. Price \$1.00.

Sunburst, H. T.—Deep cadmium yellow, with orange yellow center. 75c each.

Climbing and Rambler Roses

Crimson Rambler—Too well known to need description. 60c each.

Climbing American Beauty—Heavy, strong grower, hardy everywhere. Color rich red, passing to crimson. Very popular. 75c each.

Climbing Caroline Testout—Another strong grower with foliage and flowers same as bush

Cli Los Angeles—Copper pink, very fine. \$1.00 ea. which it is sprouted. 75c each.

Dorothy Perkins, W.—Beautiful deep pink rambler. 50c each.

White Dorothy Perkins—Same as Dorothy Perkins except that color is pure white. 75c each.

Paul's Scarlet Climber, W.—Vivid scarlet, shaded crimson. Makes brilliant display. 75c each.

Flower of Fairfield—Ever blooming, crimson rambler. Price 60c each.

Year Old Roses

Year Old Roses That Will Bloom This Season.
25c Each—\$2.50 per Dozen.

Our Selection—Per dozen, \$2.00. This is a bargain for a rose garden.

Annie Laurie (H. T.)—Flesh, yellow at base and edges.

American Legion (H. T.)—Deep cherry red.

Arthur R. Goodwin (Per)—Orange-yellow, passing to salmon.

Black Prince (H. P.)—Dark crimson.

Columbia (H. T.)—True pink.

Frau Karl Druschki (H. P.)—White, buds tinged with pink.

Gen. Jack (H. P.)—Shining crimson.

Hadley (H. T.)—Velvety crimson.

Hoosier Beauty (H. T.)—Rich crimson.

Gen. Arthur (H. T.)—Brilliant red.

J. L. Mock (H. T.)—Clear pink, reverse China pink.

Mad. Ed. Herriott (H. T.)—Red-copper.

Mlle. Cecile Brunner (Pol.) (Mignon and Sweet-heart)—Salmon pink.

Mrs. Aaron Ward (H. T.)—Golden orange.

My Maryland (H. T.)—Clear pink.

Ophelia (H. T.)—Salmon flesh, shaded rose.

Red Radiance (H. T.)—Rich red.

Sunburst (H. T.)—Cadmium yellow.

Paul Neyron (H. P.)—Deep rose.

Rose Marie (H. T.)—Rose red.

LaFrance (H. T.)—Silvery pink (Queen of Roses).

Miss Amelia Gude (H. T.)—Yellow, deeper at the center.

Mad. Caroline Testout (H. T.)—Silvery pink.

CLIMBING ROSES

Cli. American Beauty (H. Cl.)—Rosy red.

Cli. Kaiserin (Cl. H. T.)—White.

Cli. Caroline Testout (Cl. H. T.)—Silvery pink.

Cli. Ophelia (Cl. H. T.)—Salmon flesh.

Cli. Sunburst (Cl. T.)—Yellow.

Crimson Rambler (Hy. Cl.)—Crimson.

Dorothy Perkins (H. T.)—Silver pink.

Kaiserin Augusta Victoria (Cl. H. T.)—White.

Paul's Scarlet Climber (H. Cl.)—Intense scarlet.

Souv. de Claudius Pernet—Very finest yellow, beautiful. \$1.00 each.

Souv. de H. A. Verschuren, H. T.—Deep yellow, large, free and robust. \$1.00 each.

Ulrich Brunner, H. P.—Cherry red, very large and fine form. Large petals. 60c each.

Evergreens

Suitable for This Section.

- Depressa Juniper**—Low spreading Juniper. 18 in. Price \$1.50 each.
- Irish Juniper**—Slender grower, 24 to 30 inches. Price \$2.00 to \$5.00 each; 12 inches, price \$1.00 each.
- Chinese Juniper**—1½ feet. Blue green. Pyramidal shape. \$3.00 to \$5.00 each.
- Virginia Juniper**—2 to 3 feet. Columnar, dark green. \$2.00, \$3.00 and \$5.00 each.
- Globe Arbor Vitae**—12 to 18 inches. Round green and compact. \$2.00 to \$3.00; 10 in. 75c to \$1.00.
- Chinese Arbor Vitae**—18 to 30 inches, oval, green. \$2.00 to \$5.00 each.
- Pyramidal Arbor Vitae**—18 to 30 in. Pyramidal. \$1.50 to \$6.00 each.
- Lawson Cypress**—18 inches. \$1.00 each.
- Retinispora Plumosa**—18 to 34 inches. Ball-like branches, very compact. \$2.50 to \$5.00 each.
- Colorado Blue Spruce**—18 to 24 inches. One of the most beautiful of the blue evergreens. \$5.00 to \$6.00; 12 inches, \$1.00 each.
- Norway Spruce**—1½ to 3 feet. Dark green, very fine. \$2.00 to \$5.00 each.
- White Spruce**—2 to 3 feet. Light green. \$2.50 to \$5.00 each.
- Spanish Fir**—Very compact. Dark green, 3 to 4 feet. \$6.00 each.
- Mugho Pine**—New dwarf. Dark green evergreen. Everyone that sees it want it. \$4.00 and \$5.00 each.
- Boxwoods**—6 to 12 inches. 75c to \$2.00 each.
- Japanese Spurge**—Dwarf evergreen for shady corners. Grows 6 inches high and spreads over the ground. Very hardy. 20c each.

Pick out your Evergreen in our nursery.

Home Beautiful Plants

For \$2.50 we will send you a collection of 24 plants that will make your home beautiful.

CHEERFUL COLLECTION OF DAHLIAS

8 Choice Dahlias, \$2.00; 12 Choice Gladiolus, 50c.

Proper fertilizers, when correctly applied, reduce the number of culls and bring earlier maturity. Let us assist you with fertilizer problems.

Our practical experience in the market garden business, together with our constant contact with growers, enables us to fill your requirements satisfactorily. Home gardeners also receive the same high quality seeds and plants.

Bulbs

NOT ENOUGH FALL BULBS PLANTED

When you see them in bloom this Spring in our gardens, make your selection and place your order for Fall Planting. Very easily grown.

MILOT-MILLS FALL COLLECTION BULBS—50 assorted Tulips, Daffodils, Crocus, Snowdrops, and Hyacinths. \$3.00 delivered.

RAINBOW COLLECTION

GLADIOLUS BULBS—50 assorted blooming sizes. Price \$1.50. You will be pleased.

PEONIES—1 Red, 1 White, 1 Pink, choice double. Special \$1.50. Prepared for Spring planting.

Decorations

For Weddings, Dinners, Parties, Churches, and the Ball Room. If stuck for a scheme, ask us.



Castor Beans, Grown in One Season.

Mastodon Everbearing Strawberries

ARE YOU INTERESTED IN MAKING MORE MONEY? Then grow Mastodon. \$201.60 per acre from one day's picking isn't so bad. This is what this variety will do with just ordinary care. Just one day's picking of 576 quarts, selling at 35c per quart. And you can also SAVE A WHOLE YEAR with Mastodon. It will produce two crops in the same time common strawberries takes to produce only one.

Do You Merely Want Strawberries for Your Own Table Use? Just a few Mastodon berries for your table all Summer and Fall, and you will have many quarts to sell. They do well in any garden soil and produce their loads of big, delicious berries without special care. You can always have plenty of berries with Mastodon.

Price 95c dozen; 50 for \$2.00; 100 for \$3.75.



Vines and Shrubs Adds to the Home's Beauty.

GARDEN AND FLOWER SEEDS

Insecticides, Sprayers, Hose, Etc.

EVERYTHING FOR THE GARDEN

WE do not pay transportation charges, except where goods are marked postpaid.

We do not warrant in any way, express or implied, the contents or the description, quality, productiveness or any other matter, of any seeds sold by us, and we will not in any way be responsible for the crop. If the purchaser does not accept these goods on above terms no sale is made thereof, and he must return them at once and money will be refunded, subject to the above conditions.

White Jerusalem Artichokes

Planted and cultivated for the tuber, the same as potatoes. They need not be dug. If hogs are turned in on them they can easily root the tubers out. One acre will keep from 20 to 30 hogs in fine condition for several months. Excellent for fattening if fed with grain or mash ration. Plant 400 lbs. per acre early in the spring.

Parcel Post, freight or express, 10 lbs. 50c; 50 lbs. \$1.50; 100 lbs. \$2.50. Per lb., prepaid, 20c.

Asparagus

CULTURE—One oz. of seed will produce 300 plants, 1¼ lbs. of seed enough plants to set acre.

Sow early in the spring. Have the rows about 2 feet apart and an inch apart in the row, cover the seed with half an inch of soil. Thin to not less than 2 inches apart. Lay out your bed 4 feet between the rows and 18 in. in the row, plant the roots about 4 inches deep. When your asparagus appears about an inch above the ground, start to cultivate. Throw the soil on top of your bed so as to completely cover the growth and keep covering at subsequent cultivations till you have laid your ground into mounds about 16 inches high. Do not cut the first season; cut very lightly the second.

Soak seeds in hot water before sowing.

Delivery Free. Pk. Oz. ¼lb.

Colossal—A splendid variety; green and of fine quality.....	.05	.15	.40
Palmetto—Prolific and of large size; green05	.15	.40
Columbia Mammoth—White05	.15	.40
Washington Rust Proof.....	.10	.25	.75

Table Beets

CULTURE—(45 days)—1 oz. will sow 50 feet of row, 6 lbs. to an acre. Have the rows 16 inches apart moderately thick in the row and later thin out to 4 inches in the row. The thinnings furnish excellent greens. Pk. Oz. ¼lb. lb.

Crimson Globe—Extremely tender.....	.05	.10	.25	.75
Early Egyptian—The old standard —extra early05	.10	.25	.75
Early Blood Turnip Beet—A standard medium early variety.....	.05	.10	.25	.75
Eclipse Blood Turnip Beet—Extremely early, of uniform globular form; deep red color.....	.05	.10	.25	.75
Detroit Blood Turnip Beet.....	.05	.10	.25	.75
Half-Long—A half-long blood beet05	.10	.25	.75
Long Smooth Blood-Red—An excellent late variety.....	.05	.10	.25	.75

Swiss Chard	Pkt.	Oz.	Lb.
	.05	.10	.75

Sugar Beets

One oz. 100 feet to drill. Pkt. ¼lb. Lb.			
Klein Wanzleben Sugar Beet.....	.05	.25	.65
French White Sugar Beet.....	.05	.25	.65

Beans

CULTURE—Two bushels of seed will plant an acre; 1 quart, or about 2 lbs., will plant a row 100 feet long. Prices shown for Beans do not include transportation charges.

DWARF, WAX OR YELLOW-PODDED VARIETIES

Two lbs. to 100 feet of drill; 50 lbs. per acre. Pkt. Lb.

Imp. Prolific Black Wax—The earliest of the Wax Beans.....	.15	.25
Davis White Kidney Wax—Good either green or as a dry bean.....	.10	.25
Imp. Golden Wax.....	.10	.25
Wardwell's Kidney Wax—The pods are long, flat, black, delicate waxy-yellow.....	.10	.25
Pencil Pod Wax.....	.10	.25

GREEN BUSH

Dwarf Horticultural or Cranberry.....	.15	.35
Red Valentine10	.25
Long Yellow—Six weeks.....	.10	.25
Stringless Green Pod.....	.10	.25
Refugee10	.25
Lady Washington (Navy).....	.10	.25
Great Northern Navy.....	.10	.25

POLE BEANS

Kentucky Wonder Wax.....	Pkg. 10c; lb. 30c.
Kentucky Wonder—Also known as Old Home stand. Pkt. 10c; lb. 25c.	
Lazy Wife—The pods are produced in large clusters in great abundance. 30c per lb.	
Carmine Pole—Won't blight. 30c lb. Pkt. Lb.	
Italian or Roman.....	.10 .30
Oregon Pole Lima.....	.10 .30
Scarlet Runner10 .40
Dutch Case Knife.....	.10 .30
King of the Garden.....	.10 .30
Burpee's Bush Lima.....	.10 .30
Cut Short or Corn Hill.....	.10 .35
White Seed Kentucky Wonder.....	.10 .40
Portland Giant Bean.....	.10 .30
Fordhook Bush Lima.....	.10 .35
Tall Horticultural10 .30
Henderson's Bush Lima.....	.10 .30

ASPARAGUS POLE BEAN

This is a distinct specie of Beans. The pods are good eating and they really grow 3 feet or even longer. Pkt. 10c; lb. 40c.

Cabbage

CULTURE—(90 days)—1 oz. of seed will produce 2,000 plants; 8 oz. per acre. Postpaid.

EXTRA EARLY VARIETIES

	Pkt.	Oz.	1 Lb.
Copenhagen Market—Round head			
Danish seed	.10	.25	\$2.50
Early Jersey Wakefield—The old standard extra early cabbage.			
Pointed heads; splendid flavor	.05	.20	\$2.00
Early Winningstadt	.05	.20	\$2.00
Early Express	.05	.20	\$2.00
Golden Acre, or Earliest of All	.05	.35	\$3.50

SECOND EARLY VARIETIES

	Pkt.	Oz.	1 Lb.
Early Flat Dutch Variety—Only one week later than the extra early varieties	.05	.20	\$2.00
Early All Head—A good early flat-headed cabbage of good quality	.05	.20	\$2.00

WINTER VARIETIES

Late Cabbage—Drill the seed in the open ground about the middle of June. About July 20th you will get from this sowing large and stocky plants which you set out in rows 3 feet apart and 18 inches in the row.

	Pkt.	Oz.	1 Lb.
Surehead—A reliable header and a good keeper	.05	.20	\$2.00
Premium Late Flat Dutch—An excellent standard late cabbage	.05	.20	\$2.00
Large Late Drumhead—A splendid shipper. Heads large, heavy	.05	.20	\$2.00
Danish Ballhead	.05	.20	\$2.25
All Seasons	.05	.20	\$2.00
Red Dutch	.05	.20
Chinese Cabbage	.05	.25
Savoy Cabbage	.05	.30
Brussels Sprouts	.05	.30

Cauliflower

CULTURE—1 oz. for 2,000 plants, ½ lb. to acre. The culture of cauliflower is similar to that of cabbage. 4 ft. apart and 2 ft. apart in the rows. (120 days).

	Pkt.	Oz.
Danish Dry Weather	.15	\$2.00
Snowball—A splendid early variety and a sure header	.15	\$2.00
Early Dwarf Erfurt—A good sized head of excellent quality. Plants dwarf and compact	.15	\$1.75

Sweet Corn

Prices shown for Corn do not include transportation charges. One lb. for 200 hills; 15 lbs. per acre. (70 days).

	Pkt.	Lb.
Golden Giant	.10	.25
Golden Bantam	.10	.25
Early White Cob Cory—Very early; ears 6 to 7 inches long	.10	.25
Early Minnesota—A standard variety of dwarf growth	.10	.25
Ex-Early Adams or Flour Corn	.10	.20
Peep o' Day	.10	.25
Howling Mob	.10	.25

LATE VARIETIES

Stowell's Evergreen	.10	.25
Country Gentleman	.10	.25
Black Mexican	.10	.25
Pop Corn—Rice	.10	.15

Carrots

CULTURE—(70 days)—1 oz. for 100-foot row, 4 lbs. for one acre. Carrots are very hardy and can be planted as soon as you stir up from 2 to 3 inches of top soil. Have rows 14 inches apart and thin to 4 inches apart in the rows. Delivered free.

	Pkt.	Oz.	¼ lb.	Lb.
Chantenay, or Model—An excellent stump rooted variety	.05	.10	.30	.90
Oxheart, or Guerande—About 6 ins. long, thick and blunt rooted, orange red	.05	.10	.30	.90
Danver's Half-Long	.05	.10	.30	.90
White Belgian	.05	.10	.30	.85
French Forcing	.05	.10	.30	\$1.25
Golden Giant—For stock10	.30	.90
Long Orange	.05	.10	.30	.85
Coreless10	.30	.90

Celery

CULTURE—(115 days)—1 oz. for about 2,500 plants; 1 lb. required for one acre. Delivered free.

	Pkt.	Oz.	
Giant Pascal—Late05	.25
Golden Self-Blanching—French. A good standard early variety, blanching easily	.05	.30
White Plume—Very early05	.25

Chervil

(Koerbel-Cerfeuil)

A vegetable similar to parsley. Used for flavoring soups and salads, also for garnishing. Pkt. 5c; per oz. 15c.

CHIVES—SCHNITTLAUGH

The leaves are used for flavoring soups, scrambled eggs, or are mixed with cottage cheese. Per pkt. 15c; plants, per bunch, 25c.

Corn Salad

Large Headed Fetticus or Lamb's Lettuce—A small, quick growing salad plant, for late fall, winter and spring use. Pkt. 10c; per oz. 30c.

Collards

This is a form of cabbage held in high esteem all through the South. 5c pkt; 10c oz.

Cucumbers

(Colorado Grown)

CULTURE—(65 days)—1 oz. to 50 hills, 2 lbs. per acre. For an early crop plant in hot beds on pieces of sod 6x6 inches and about 3 inches thick. Plant 5 or 6 seeds in the center of each piece and when true leaves appear and danger of frost is over move plants to the field, put them in rows 5 feet apart and 3 feet apart in the row.

	Postpaid.	Pkt.	Oz.	¼ lb.	Lb.
Japan Climbing05	.15	.40	\$1.50
White Spine, Improved05	.15	.40	\$1.25
Early Cluster—Short green variety05	.15	.40	\$1.25
Kirby's Stay Green05	.20
Boston Pickling05	.15	.40	\$1.25
Long Green—Dark green fruits05	.15	.35	\$1.25
Davis Perfect05	.15	.30	\$1.00
Gerkin10
Telegraph25
Chicago Pickling10	.15	.40	\$1.25
Snows Perfect10	.15	.35	\$1.00
Lemon Cucumber10	.30
Early Frame05	.15	.40	\$1.25

WATER CRESS

Water Cress—Packet, 10c.

CURLED GARDEN CRESS

A small curled plant with a pleasant, slightly pungent flavor. Pkt. 5c; oz. 15c.

Egg Plant

CULTURE—(125 days)—1 ounce will produce 1,000 plants; 4 lbs. to the acre. Sow in hot bed March 20th and at the first sign of true leaves remove to cold frame into rows 6 inches apart and 4 inches in the row.

	Pkt. Oz.
New York Improved.....	.05 .40
Black Beauty.....	.05 .40
Tree Egg Plant.....	.05 .40

Herbs

Anise, Balm, Basil, Caraway, Corlander, Dill, Fennel, Horehound, Lavender, Majoran Sage, Summer Savory, Thyme, Etc. Per pkt. 5c.

Kohl-Rabi

Early Purple—A very desirable sort for forcing or early out-door planting. Pkt. 5c; oz. 25c.
Early White Vienna—Is the earliest and best for forcing. Pkt. 5c; oz. 25c.

Kale or Borecole

Kale, or Borecole, is a kind of cabbage that does not form a close and solid head. It requires the same treatment as cabbage, and is very hardy, being improved by frost.

Dwarf, Green Curled Scotch.

Tall Green Curled Scotch—Produces an abundance of dark green, curled leaves. Very hardy.

Both varieties of Kale—5c pkt; 20c oz.

Thousand Headed—Pkt. 5c; oz. 10c; ¼ lb. 30c.

Lettuce

CURLED VARIETIES

1 oz. for 3,000 plants. (75 days).	Pkt. Oz. ¼lb.
Early Curled Simpson —A popular market variety for forcing or very early planting outdoors.....	.05 .15 .40
Grand Rapids —Large, beautifully curled, crisp and tender.....	.05 .15 .40
Early Curled Silecia —An excellent early curled variety.....	.05 .15 .40
Black Seeded Simpson05 .15 .40

HEAD VARIETIES

Crispette05 .15 .40
Prize Head —Brown edge.....	.05 .15 .40
May King05 .15 .40
Hansen Head —Compact and forms cabbage-like heads.....	.05 .15 .40
Immensity —Tender and crisp.....	.05 .15 .40
Iceberg05 .15 .40
New York, or Wonderful —Best of all.....	.05 .20 .75
Big Boston05 .15 .40
Cos Lettuce05 .15 .40

Leek

Large London, or American Flag—Pkt. 5c; oz. 30c

Mangles

The Great Animal Feed, Whose Value is Only Partly Recognized.

Mangles, or roots, are firmly established in all European countries where livestock is raised in any considerable numbers.

Five pounds to the acre.	Oz. ½lb. Lb.
Giant Yellow, or Gate Post10 .30 .55
Long Red10 .30 .55
Golden Tankard10 .30 .55
Sludstrop10 .30 .55
Half Sugar10 .30 .55

Mustard

MUSTARD FOR GREENS

	Pkt. Oz.
Foodhook05 .20
Southern Curler05 .20
White English05 .20
Chinese05 .20

OKRA OR GUMBO

CULTURE—2 oz. for 100 feet of row, 12 lbs. for one acre. Do not plant until the ground is warm or about corn planting time. Gather the pods while they are young and before they get woody.

	Pkt. Oz.
Long Green05 .10
White Velvet05 .10

Muskmelon

(Colorado Grown)

CULTURE—(95 days)—2 oz. seed for 50 hills, 4 lbs. for one acre. Postpaid. Pkt. Oz. ¼lb. Lb.

Burrell's Gem —Orange color.....	.05 .15 .35 \$1.00
Rocky Ford or Netted Gem —The sweet, green flesh melon.....	.05 .15 .35 \$1.00
Extra Early Hackensack —Large size and attractive appearance; skin is netted; flesh is green.....	.05 .15 .35 \$1.00
Paul Rose, or Petoskey —Orange in color.....	.05 .15 .35 \$1.00
Osage —Salmon color.....	.05 .15 .35 \$1.00
Gold Lined Rocky Ford05 .15 .40 \$1.50
Mexican Banana05 .15 .35 \$1.25
Montreal Market05 .15 .35 \$1.25
Burpee's Spicy —Salmon color.....	.05 .20 .35
Pollock's 10-2505 .15 .35 \$1.00
Wenatchee Giant10 .35 .50
Edward's Perfect10 .20 .50 \$1.50
Hearts of Gold (Hoo-Doo)10 .20 .50 \$1.50
Cannon Ball10 .15 .35 \$1.25
Tip Top10 .15 .35 \$1.25
Persian10 .60 .90
Honey Dew10 .15 .35
Honey Ball10 .30 .50 \$3.25
Large and Yellow05 .15 .35 \$1.00

Watermelons

	Pkt. Oz. ¼lb. Lb.
Rattlesnake05 .10 .35 \$1.00
Harris Early05 .10 .35 \$1.00
Kleckley's Sweets05 .10 .35 \$1.00
Improved Kleckley's Sweet (from Georgia)05 .15 .50 \$2.00
Tom Watson05 .10 .35 \$1.00
Florida Favorite05 .10 .35 \$1.00
Fordhook05 .10 .35 \$1.00
Sweet as Honey05 .10 .35 \$1.00
Chilean Black Seeded05 .10 .35 \$1.00
Cole's Early05 .10 .35 \$1.00

Black Seeded Angeline.....	.05	.10	.35	\$1.00
Irish Gray05	.10	.35	\$1.00
Volga Winter Melon.....	.05	.20
Sweet Heart05	.10	\$1.00
Halbert's Honey05	.10	.35	\$1.00
Peerless, or Ice Cream.....	.05	.10	.35	\$1.00
King and Queen Winter.....	.05	.10	.35	\$1.00
Citron Red and White Seeded.....	.05	.10	.35	\$1.00

KLONDIKE (From Imperial Valley)

The seed is small. One pound of Klondike will number as many seeds as two pounds of other varieties. The color of the seed is brown, mottled black.—Pkt. 10c; oz. 25c; ¼ lb. 85c; 1 lb. \$2.50. Postpaid.

Onions

CULTURE—(100 to 110 days)—1 oz. for 100 feet of row; 6 lbs. for 1 acre. For sets, 60 to 70 lbs. of seed should be sown to the acre, more if the ground is light. Sow the seed early in spring as soon as the ground is in working order, not sticky. For extra large and heavy bulbs, such sorts as Ailsa Craig, Prizetaker, and Bermuda, are sown in hot beds and later transplanted into rows a foot apart and 4 inches apart in the rows.

	Pkt.	Oz.	¼lb.	Lb.
Ailsa Craig05	.35	\$1.00	\$3.50
Prizetaker—Of immense size, globular shape and good quality. The skin is light yellow05	.30	\$1.00	\$3.00
White Queen—A very small, pure white onion; used for pickling and for early green onions05	.35	\$1.00	\$3.50
Large Red Wetherfield—Very large onion, flattened in shape05	.30	.85	\$2.50
Australian Brown—Early; medium size; nearly globular in shape05	.30	.75	\$2.50
Yellow Globe Danvers—A very popular variety05	.30	.90	\$3.00
Yellow Flat Danvers—Early, very productive and reliable05	.25	.75	\$2.75
White Portugal, or Silver Skin—A splendid early flat, white variety; one of the best for home use05	.30	.85	\$3.00
Southport Red Globe—A very large onion, globular in form05	.30	\$1.00	\$3.00
Italian Bottle10	1.00
Mountain Danvers05	.30	.90	\$3.00
Southport Yellow Globe—An excellent large globular onion.....	.05	.30	.85	\$3.00
White Bermuda—Genuine05	.35
White Bunching10	.30	.90	\$2.00
Southport White Globe.....	.05	.35	\$1.00	\$3.50
Crystal Wax10	.35
Sweet Valencia (Spanish).....	.10	.40	\$1.50	\$4.50

ONION SETS

Yellow Bottom—Per lb. (postage extra).....	15c
White Bottom—Per lb. (postage extra).....	20c

PARSLEY

CULTURE—(60 days)—1 oz. to 100 feet of row. Moss Curled—Pkt. 5c; oz. 20c; ¼ lb. 45c.

SALISFY

Mammoth Sandwich Island—The roots are long, white in color. Pkt. 5c; oz. 25c; ¼ lb. 60c.

Parsnips

CULTURE—(130 days)—1 oz. to 100 ft. of row, 6 lbs. to the acre. Pkt. Oz. ¼lb. Lb.
Improved Hollow Crown.....05 .10 .25 .80

Garden Peas

CULTURE—(50 to 60 days)—3 pints, or 3 lbs. for 100 feet of row, 6 bushels for 1 acre.

Early Varieties—Plant as early in the spring as the ground is thawed out to the depth of about 3 inches. sow by hand very thickly in a trench about 2 inches deep.

EARLY VARIETIES

Not Postpaid.	Pkt.	½lb.	Lb.
Honey Sweets—15 inches.....	.10	.20	.35
Nott's Excelsior—Height 14 inches.....	.10	.15	.25
American Wonder—Of dwarfed, compact growth, 10 to 12 inches high.....	.10	.15	.25
Little Gem—15 inches high; a little later than American Wonder.....	.10	.15	.25
Alaska—Very early and hardy; 2 feet high10	.15	.25
Thos. Laxton—Three feet.....	.10	.15	.25
Gradus—20 inches.....	.10	.15	.25

LATE OR MAIN CROP VARIETIES

Yorkshire Hero—Tall10	.15	.25
Dwarf, Telephone, Carter's Daisy—Requiring no support.....	.10	.15	.25
Strategem—Vines 20 inches high.....	.10	.15	.25
Telephone—Height 4½ feet.....	.10	.15	.25
Melting Sugar—Tall10	.15	.30
White Marrowfat—Tall10	.15	.25
Champion of England—Tall.....	.10	.15	.25
Dwarf Gray Sugar (Edible pod).....	.10	.15	.30
Everbearing10	.15	.30
Laxtonian10	.15	.25

Peppers

CULTURE—(125 to 140 days)—1 oz. of seed will produce about 1,500 plants. The culture for pepper is similar to Egg Plant. Have the plants in hot beds 3x2 inches and in the field in rows 3 feet apart and 18 inches apart in the rows. Pepper requires very rich soil. Postpaid. Pkt. Oz. ¼lb.

Chinese Giant05	.50	\$1.75
Ruby King05	.35	\$1.00
Pimento Pepper Seed.....	.05
Large Bell or Bull Nose.....	.05	.35	\$1.00
Long Red Cayenne—3 or 4 ins. long.....	.05	.35
Red Chili—Small bright red peppers05	.35

Pumpkins

One ounce for 30 hills; 4 lbs. per acre. Delivered free. Pkt. Oz. ¼lb. Lb.

Sugar, or Sweet Pie—Small, handsome pie pumpkin of delicious flavor05	.10	.35	\$1.00
Connecticut Field—Large orange-colored field pumpkin, generally grown for stock but good for pies05	.10	.35	\$1.00
Japanese Pie05	.20	.40	\$1.50
Sweet Potato Pie.....	.05	.10	.35	\$1.00
Golden Cushaw—Crookneck sort05	.10	.35	\$1.00
Mammoth King05	.10	.35	\$1.00

Rhubarb

CULTURE—1 oz. for 100 feet of row. Sow in rows 18 inches apart and thin to 6 inches apart in the row. The following spring set out your roots in rows 4 feet apart and 3 feet apart in the rows. Rhubarb requires very rich soil.

Rhubarb—Myatts Victoria05	.15	.50	\$1.40
-------------------------------	-----	-----	-----	--------

Radishes

CULTURE—(30 days)—1 ounce for 100 feet of row; 12 lbs. per acre. Sow as soon as the ground is open, on fairly rich soil to induce roots of good quality.

EARLY ROUND VARIETIES

Pkt. Oz. ¼lb. Lb.

Early Scarlet Turnip Radish—A popular small, early, bright red turnip shaped radish.....	.05	.10	.30	.90
Early Scarlet Turnip White Tip—An excellent early round.....	.05	.10	.30	.90
French Breakfast—General favorite; oval shape, bright scarlet and white tip.....	.05	.10	.30	.90
White Globe.....	.05	.10	.30	\$.1

EARLY LONG VARIETIES

White Icicle.....	.05	.10	.30	.90
White Vienne, or Lady Finger—Long and tapering.....	.05	.10	.30	.90
Long Bright Scarlet.....	.05	.10	.30	.90
Crimson Giant.....	.05	.10	.30	.90
China Rose.....	.05	.10	.30	.90
Black Spanish, Long—Very hardy and good for winter use.....	.05	.10	.30	1.25
Chinese White Winter or Celestial (or Cal. Mammoth White Winter)—The well known and popular winter variety.....	.05	.20	\$1.25
Long White Japanese—A winter variety, growing frequently two feet long. Skin is white.....	.10	.30	\$.1	\$3.00

DON'T GROW WORMY RADISHES! There is no use of it, since we offer "Carco" Vegetable Spray. It will keep the maggots away from the roots and is very inexpensive to use.

RUTABAGA

American Purple Top.....	.05	.10	.30	.85
--------------------------	-----	-----	-----	-----

Spinach

CULTURE—(50 to 60 days)—1 oz. for 100 feet of row, 12 lbs. per acre, 15 lbs. to the acre if broadcasted. Plant late in fall or early in the spring as soon as the ground is open.

Pkt. Oz. ¼lb. Lb.

Thick Leaved, Improved—For either fall or spring sowing. Produces large, thick, bright green, crumpled leaves.....	.05	.10	.25	.65
Long Standing—An excellent compact variety with thick fleshy dark green leaves.....	.05	.10	.25	.65
King of Denmark.....	.05	.10	.30	.75
Victoria.....	.05	.10	.25	.65

NEW ZEALAND SPINACH

Pkt. 5c; oz. 15c; ¼ lb. 35c; ½ lb. 60c; 1 lb. \$1.00

Squashes

CULTURE—(60 to 110 days)—1 oz. for 20 to 40 hills, 4 to 6 lbs. to one acre, depending on variety, whether small or large seeded. Pkt. Oz. ¼lb. Lb.

Blue Hubbard.....	.05	.10	.35	\$1.25
Pikes Peak, or Sibley.....	.05	.10	.35	\$1.25
Golden Summer Crookneck.....	.05	.10	.35	\$1.00
Hubbard (True)—Warted.....	.05	.10	.35	\$1.25
Golden Hubbard.....	.05	.10	.35	\$1.25
Mammoth Chili.....	.05	.10	.35	\$1.25
White Summer Crookneck.....	.05	.10	.35	\$1.00
Boston Marrow—Orange color.....	.05	.10	.35	\$1.25
Delicious Squash—Large, long,				

greenish blue color.....	.05	.10	.35	\$1.25
Bush Scallop White—White Patty				
Pan bush variety.....	.05	.10	.35	\$1.00
Delicata.....	.05	.15	.35	\$1.25
Table Queen (Des Moines).....	.10	.25	.35	\$1.25
Mammoth Whale.....	.10
Mammoth Yellow Bush.....	.10
Marblehead.....	.05	.10	.35	\$1.25
Fordhook.....	.05	.10	.35	\$1.25

VEGETABLE MARROW

Vegetable Marrow—English. Pkt. 10c.

Turnips

CULTURE—(45 to 125 days)—½ oz. for 100 ft. of row, 1¼ lbs. per acre. If sown broadcast use 2 pounds to the acre. RUTABAGAS should be sown 18 inches between the rows and thinned out to 6 inches in the row. It must be sown early in the spring. Pkt. Oz. ¼lb. Lb.

Cow Horn.....	.05	.10	.25	.75
Early Flat Dutch.....	.05	.10	.25	.75
Purple Top White Milan—Extra early.....	.05	.10	.25	.75
Purple Top Strap Leaf.....	.05	.10	.25	.75
Orange or Golden Ball.....	.05	.10	.25	.75
White Egg.....	.05	.10	.25	.75
White Globe.....	.05	.10	.25	.75
Snow Ball.....	.05	.10	.25	.75
Seven Top—For greens.....	.05	.10	.25	.75
Yellow Aberdeen.....	.05	.10	.25	.75

RAISE NO MORE WORMY TURNIPS! Use "Carco"—1 part to 125 parts of water.

Tomatoes

CULTURE—(130 days)—1 ounce will produce about 3,000 plants, 4 oz. for 1 acre. Sow in hot beds about March 1st, in rows 3 inches apart, transplant when 2 inches high into cold frames. When plants are about 6 inches high set out into the field, the early varieties in rows 4 feet apart and 3 feet apart in the rows, and the late varieties such as Stone or Bonny Best, 5 feet apart and 4 feet apart in the rows.

Delivery Free. Pkt. Oz. ¼lb. Lb.

Husk Tomato, or Ground Cherry yellow.....	.05
Dwarf Champion, or Tree.....	.05	.35	\$1.	\$3.50
Golden Queen.....	.05	.35	\$1.	\$3.50
Bonny Best Select—First for choice, fine for Wenatchee; early scarlet.....	.05	.35	\$1.	\$3.50
Ponderosa—Immense size, finest quality, purplish ermine.....	.05	.40	1.25	\$5.00
Stone—All around red tomato, main crop.....	.05	.35	\$1.	\$3.50
Earliana—Earliest food variety grown.....	.05	.35	\$1.	\$3.50
Yellow Pear.....	.05	.30
John Baer—Bright red, very fine.....	.05	.35	\$1.	\$3.50
Chalks Early Jewel.....	.05	.25	\$1.	\$3.00
Early Michigan.....	.05	.25	\$1.	\$3.00
June Pink.....	.05	.25	\$1.	\$3.00
Livingston Globe.....	.05	.35	\$1.	\$3.50
Red Head.....	.10	.40
Marglobe.....	.10	.50
Topepto, Tomato-Pepper.....	.25

MAKE YOUR ROADSIDE MARKET ATTRACTIVE

For 50c we will mail a collection of Flower Seeds, or for \$1.00 we will send a collection of Plants that will make you proud of your place.



A Most Desirable Shade Tree for This Section

Chinese or Siberian Elm—Plant It!

Probably the most valuable tree recently introduced is the Chinese, or Siberian Elm. It bids fair to supercede all other trees, especially in the central and western portions of this country. It was introduced from China and distributed by the government some time ago and reports are coming in that are truly astonishing.

In appearance the Chinese Elm differs as much from the other elms as in its habit of growth. A much more graceful tree, its foliage is dense and a rich green color and does not brown or turn rusty, and remains on the trees several weeks after the others have fallen. It is the first tree to put on foliage in the spring and the last to loose its leaves in the fall. In the southern states it is almost an evergreen.

We have grown this tree in our nurseries for the past three years, where it outgrew American Elm three to one, and are thoroughly convinced that it is all it is said to be and more. A good street tree—shade and ornamental. Will grow in wet or dry places. You will like it. The fastest growing and most graceful tree you can buy.

PRICE—5 feet, \$1.00; 6 to 8 feet, \$1.75; 8 to 10 feet, \$2.50 each.



A Milot-Mills Window Box Sixty Days After Planting

WENATCHEE FOLKS!
Prizes will be awarded
to the
Best Kept Lawn
The Most Colorful Planting
Shrubs, Perennials,
Annuals, Window Boxes

* * * * *

Nothing adds more to the beauty of your lawn than a well planted Window Box. Let us do it. Your soil must be right.

The Kiwanis Club is sponsoring this City Beautiful Campaign thru the Chamber of Commerce "City Affairs Committee." Start now—we will help you.

Milot-Mills Landscape Dept.

Flower Seeds—Per Packet 10c

Classification of Flower Seeds for Special Purposes

This page is intended to aid you in the selection of seeds that you may have flowers for every purpose.

FLOWERING ANNUALS, ALSO PERENNIALS WHICH FLOWER FIRST SEASON FROM SEED. Varieties Marked * Are Best for Beds and Masses.

- | | | |
|----------------|----------------|----------------|
| Abronia | *Dianthus | Nasturtium |
| Acroclinium | *Dimorphotheca | Nemesia |
| *African Daisy | *Eschscholtzia | Nemophila |
| *Ageratum | *Gaillardia | Nicotina |
| *Alyssum | Geranium | Nigella |
| *Antirrhinum | *Godetia | Oenothera |
| Arctotis | Gomphrena | *Pansy |
| *Asters | Gypsophila | *Petunia |
| *Balsam | Helianthus | *Phlox |
| *Bartonia | Helichrysum | *Poppy |
| Begonia | Hollyhock | *Portulaca |
| Bells | (Annual) | Rhodantha |
| Brachycome | Hunnemannia | Rudbeckia |
| *Calendula | Ice Plant | Salpiglossis |
| *Calliosis | Kochia | *Salvia |
| *Candytuft | *Larkspur | Scabiosa |
| Canna | Lavatera | Schizanthus |
| Carnation | Linum | *Silene |
| *Celosia | Lobelia | Stevia |
| *Centaurea | Lupinus | *Stocks |
| *Chrysanthemum | Marigold | Sunflower |
| (Annual) | Marvel of Peru | Sweet Peas |
| Clarkia | Matricaria | *Verbena |
| *Convolvulus | Matthiola | Vinea Rosea |
| Cosmos | Mignonette | *Viola Cornuta |
| Dahlia | Mimulus | (Annual) |
| Datura | Mirabilis | *Zinnia |
| | Myosotis | Wallflower |

FOR CUT FLOWERS

- | | | |
|---------------|-------------|--------------|
| Acroclinium | Coreopsis | Mignonette |
| Antirrhinum | Cosmos | Pentstemon |
| Aquilegia | Dahlia | Poppies |
| Asters | Daisies | Pyrethrum |
| Candytuft | Delphinium | Salpiglossis |
| Carnation | Dianthus | Salvia |
| Arctotis | Gaillardia | Scabiosa |
| Bartonia | Gerbera | Schizanthus |
| Branchycome | Gypsophila | Statice |
| Calendula | Hunnemannia | Stevia |
| Calliopsis | Larkspur | Stocks |
| Celosia | Lupinus | Sunflower |
| Centaurea | Marigold | Sweet Peas |
| Chrysanthemum | Matricaria | Zinnias |

ORNAMENTAL AND FOLIAGE PLANTS

- | | | |
|------------|--------------|-----------|
| Amaranthus | Centaurea | Pyrethrum |
| Canna | Candidissima | Ricinus |
| Coleus | Kochia | |

FRAGRANT FLOWERS

- | | | |
|------------|-------------------|---------------|
| Abronia | Dianthus | Scabiosa |
| Alyssum | Heliotrope | Stocks |
| Centaurea | Mathiola | Sweet Peas |
| Carnation | Mignonette | Sweet William |
| Clematis | Mimulus | Violet |
| Paniculata | Nicotiana Affinis | Wallflower |
| | Pansy | |

FOR HANGING BASKETS, WINDOW BOXES

DROOPING

- | | | |
|---------------------|----------------|------------|
| Alyssum | Convolvulus | Petunia |
| Asparagus Sprengeri | Kenilworth Ivy | Smilax |
| | Lobelia | Thumbergia |
| | Nasturtium | |

UPRIGHT

- | | | |
|-----------|------------|-------------|
| Ageratum | Coleus | Primulas |
| Begonia | Geranium | Vinea Rosea |
| Candytuft | Heliotrope | Viola |
| | Pansy | |

FOR EDGING AND BORDER

- | | | |
|----------------|------------------|------------------|
| Ageratum | Dianthus | Pansy |
| Alyssum | Dimorphotheca | Phlox Drummondii |
| Asters (Dwarf) | Gomphrena | Petuna Nana |
| Begonia | Kochia | Erecta |
| Bells | Lobelia | Pyrethrum |
| Candytuft | Marigold (Dwarf) | Shasta Daisy |
| Centaurea | Myosotis | Sweet Peas Cupid |
| Candidissima | Nasturtium | Viola |
| Coleus | Nemophila | Zinnia (Dwarf) |

CLIMBING VINES

ANNUAL

- | | | |
|------------------|------------------------|----------------|
| Balloon Vine | Cypress Vine | Mina Lobata |
| Balsam Apple | Japanese Hop | Nasturtium |
| Balsam Pear | Hyacinth Bean | Scarlet Runner |
| Canary Bird Vine | Ipomoea | Sweet Peas |
| Cardinal Climber | Papanese Morning Glory | Thumbergia |
| Convolvulus | | Wild Cucumber |

PERENNIALS

- | | | |
|---------------------|-----------------|-----------------------|
| Ampelopsis | Coboea Scandens | Smilax |
| Antigonon (Bulbs) | Ipomoea | Maderia Vine (Bulbs) |
| Asparagus | Lathyrus | Wisteria |
| Australian Pea Vine | Moon Vine | Cinnamon Vine (Bulbs) |
| Clematis | Mandevilla | |
| | Mina Lobata | |
| | Passiflora | |

FLOWERING PERENNIALS

For Permanent Beds and Borders, Many Flowering the First Season.

- | | | |
|------------------|----------------|---------------|
| Agathaea | Dianthus | Petunia |
| Anchusa | Digitalis | Phlox |
| Anemone | (Foxglove) | Poppy |
| Antirrhinum | For-Get-Me-Not | Primula |
| Aconitum | Freesia | Pyrethrum |
| Aquilegia | Gaillardia | Ricinus |
| Begonia | Geranium | Romneya |
| Bells | Gerbera | Salvia |
| Canterbury Bells | Geum | Scabiosa |
| Campanula | Gypsophila | Shasta Daisy |
| Canna | Heliotrope | Statice |
| Carnation | Hollyhock | Stevia |
| Centaurea | Hunnemannia | Stocks |
| Candidissima | Lantana | Snapdragon |
| Chrysanthemum | Lobelia | Sweet William |
| Coreopsis | Lupinus | Valeriana |
| Cyclamen | Mimulus | Verbena |
| Daisy | Myosotis | Vinea |
| Dahlia | Pansy | Viola |
| Delphinium | Pentstemon | Wallflower |

FOR SHADY PLACES

- | | | |
|-------------|--------------|-----------|
| Anemone | Clarkia | Myosotis |
| Antirrhinum | Cinceria | Oenothera |
| Aquilegia | Cyclamen | Pansy |
| Begonia | Delphinium | Primula |
| (Tuberous) | Scarlet Flax | Viola |
| Bells | Foxglove | Violets |
| Daisy | Godetia | Ferns |
| | Mimulus | |

EVERLASTING FLOWERS

- | | | |
|-----------------|------------------|-------------|
| Ammobium | Gysophila | Rhodantha |
| Acroclinium | Paniculata | Statice |
| Gomphrena | Helichrysum | Xeranthemus |
| (GlobeAmaranth) | Ornament Grasses | |

SPENCER SWEET PEAS

Firey Cross—Bright rose, wing primrose.....	Oz. 25c	Wedgewood—Lavender	Oz. 25c
White Spencer—Finest strain.....	25c	Primrose	25c
King Edward VII—Pure red.....	25c	Spencer Sweet Peas—Mixed.....	20c
Illuminator—Orange scarlet.....	25c	Grandiflora Sweet Peas—Mixed.....	10c
Helen Lewis—Orange scarlet.....	25c	Burpee's Early Flowering—Package.....	10c
Countess Spencer—Clear pink.....	25c	We have a complete assortment of Vegetables and Flower Seeds—but should you not find just what you want, kindly bring or send in your list and we will secure them for you.	
Margaret Atlee—Salmon and Cream.....	25c		
Asta-O-Hue—Lavender	25c		
Captain of the Blues.....	25c		

FIELD SEEDS

Montana Alfalfa

The seed is large and of high germination, with a purity test of 99 or better. Our seed is obtained in those sections where plants have endured the extreme cold of winter and thrive in high altitudes. Tested by Montana State Agric. College.

Montana Registered Grimm—Blue Tag, lb.....55c
 Montana Peerless Dryland, lb.....30c
 White Sweet Clover (Scarified) per lb.....15c
 Yellow Clover (Scarified) per lb.....15c
 Alsike40c
 Vetch, Winter Hairy, per lb.....18c
 Sorghum Amber, per lb.....15c
 Sunflower, per lb.....15c
 Kentucky Blue Grass, per lb.....50c
 Brome Grass, per lb.....18c
 Feterita15c
 Kaffir Corn15c
 White Clover (Dutch) per lb.....60c
 Milo Maize15c
 Sudan Grass15c
 Red Clover45c
 Orchard Grass, Montana Grown, lb.....30c
 Field Corn (Minnesota No. 13) per lb.....15c
 Broom Corn15c
 Rhode Island Bent.....\$1.50

Peanuts

CULTURE.—Peanuts require light sandy soil, well limed. Plant in the spring as soon as the ground has become warm, in rows 30 to 36 inches apart, placing the seed 6 to 10 inches apart in the row. It is not necessary to remove the hull when planting. Keep well hoed. When matured pull and hang up to dry.

VALENCIA—A very desirable and productive Spanish bush type. Mild, sweet flavored. Per pound, 35c. postpaid.

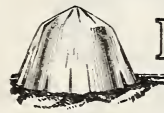
Mulford Cultures for Legumes

Mulford Cultures are easily applied to the seed before planting and contain pure tested strains of active, vigorous nitrogen fixing bacteria, for inoculating seeds of legumes or soil. Enormous numbers of these very valuable bacteria are thus available to you in every package of Mulford Culture and may readily be applied to your seed. The sealed bottle insures purity.

PRICES—Alfalfa, Red Clover, White Clover, Alsike, Vetch; Peas, Beans, 1/2 bu., 60c; 1 bu., \$1; 2 1/2 bu. \$2.25.

Special small size for Sweet Peas, Garden Peas, and Beans, 35c.

Always specify on your order what crop you want to inoculate, as there is a different strain of bacteria for each legume.



Germaco
Hotkaps
 New Method of
 Plant Protection

Hot-Kap Paper Plant Covers

Because of the convenience of setting the Hot-Kap Cover, it has become very popular. So constructed that the wind cannot blow them away, because the machine places dirt around the edges. They are already folded ready for use. One man can do the work of four. After setting the field looks uniform, like a well kept garden. Eleven inches in diameter at base for tomatoes, egg plant.

HOT-KAP PRICES—Per 5,000, @ \$11 per 1000; per 1,000, \$11.50; 500, \$6.25; 250, \$3.25; 100, \$1.50. Per dozen 25c. Postpaid.

Field, Farm, Grass and Clover Seeds---Quantity per Acre

Alfalfa 12 to 15 lbs.
 Artichokes400 to 600 lbs.
 Barley—(drills, 75 lbs.).....broadcast 100 lbs.
 Buckwheat—(drills, 35 lbs.).....broadcast 50 lbs.
 Cheat 75 to 100 lbs.
 Clover—Alsike and White 6 to 8 lbs.
 White for lawn.....1 lb. to 20 sq. feet
 Crimson 15 to 20 lbs.
 Red 10 to 12 lbs.
 Sweet 15 to 20 lbs.
 Corn, Field—Hills 10 to 12 lbs.
 For Fodder, drills 50 lbs.
 Flax 35 to 45 lbs.
 Grass, Kentucky Blue—Pasture 25 to 30 lbs.
 Kentucky Blue—for Lawns 1 lb. to 15 ft. sq.
 Mixed Lawn 1 lb. to 15 ft. sq.
 Red Top—Hulled, Solid Seed 8 to 15 lbs.
 Orchard 25 to 30 lbs.
 Brome Grass 20 to 30 lbs.

Rye Grass—for Pasture..... 20 to 30 lbs.
 Rye Grass—for Lawns..... 100 lbs.
 Sudan—drills 3 to 5 lbs.
 Sudan—broadcast 16 to 20 lbs.
 Kaffir Corn—Drills 6 to 10 lbs.
 Millet 20 to 30 lbs.
 Oats—for Seed 75 to 100 lbs.
 For Hay 100 lbs.
 Potatoes—(60 lbs. per bushel)..... 15 to 18 bu.
 Rape—(drills 3 lbs.).....broadcast 5 lbs.
 Rye—for Grain 60 to 75 lbs.
 For turning under..... 100 lbs.
 Speltz or Emmer 80 lbs.
 Sugar Cane 10 to 12 lbs.
 Sunflower 5 to 7 lbs.
 Timothy 10 to 12 lbs.
 Vetchea 80 lbs. or 60 lbs. with 40 lbs. Oats
 Vetch—Hairy or Sand 30 lbs.
 Wheat 90 to 120 lbs.

Suitable Distance for Planting Trees and Plants

NOTE.—Depending on method of cultivation. In planting in the home garden for hand cultivation you can set plants or trees closer.

Apples, Standard25 to 35 ft.
 Apples, Dwarf10 to 12 ft.
 Pears, Standard20 to 25 ft.
 Pears, Dwarf 10 ft.
 Peaches and Apricots.....18 to 22 ft.
 Cherries, Sweet30 to 35 ft.
 Cherries, Sour18 to 22 ft.
 Plums and Prunes.....20 to 25 ft.
 Quinces 15 to 18 ft.

Walnuts40 to 50 ft.
 Currants and Raspberries3 by 6 ft.
 Gooseberries4 by 6 ft.
 Strawberries, Matted Rows.....2 1/2 by 4 ft.
 Asparagus, in beds1 by 1 1/2 ft.
 Asparagus, in field1 by 4 ft.
 Rhubarb3 by 6 ft.
 Logans, Cory Blackberries, and Grapes
 Rows6 to 9 ft apart
 Plants in the Row.....6 to 10 ft. apart

Garden Tools, Sprayers, Plant Foods, Etc.

Handy Garden Tools



Moe's Steel Trowel. Price, postpaid.....30c



Moe's Steel Transplanter. Price, postpaid.....30c



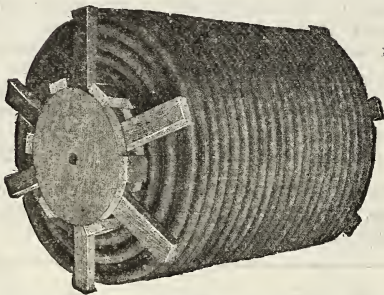
Moe's Claw Weeder. Price, postpaid.....30c



Moe's Knife Weeder. Price, postpaid.....20c

Moe's Asparagus Knife and Weeder. Postpaid 30c

Garden Hose



First Class Rubber Hose—Such as we use in the greenhouses. Any length you wish, size $\frac{3}{4}$ -in. Per foot.....16c
 $\frac{5}{8}$ -inch, per foot.....14c
 Couplings, 25c extra.

Fountain Sprinklers

"Twin Sprinkler"—Made of zinc metal and can not rust. Will cover the lawn evenly for 16 feet radius. Very popular. Postpaid. Price, 40c.

Fan Sprinkler—Throws water in one direction only. Very popular. Postpaid. Price, 35c.

CLAY HANGING BASKETS

10 inch 75c
 12 inch \$1.50

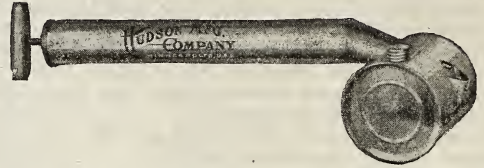
Grafting Wax for This Climate

Snyders, per lb.....60c
 Dandos, per lb.....60c
 Russell's, per lb.....60c
 Four lb. lots.....50c

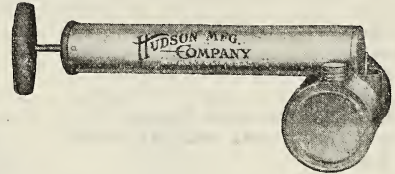
Write for prices on larger quantities. Please add postage.

EVERGREEN SPRAY—35c, 1 $\frac{1}{2}$ oz.

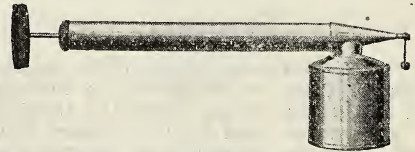
Sprayers



The "Misty" Sprayer is used to apply all kinds of insecticides on plants, etc. Unsurpassed for applying all kinds of stock dips and fly killer on cattle and horses; also for disinfecting poultry houses, barns, etc. Made of good tin and holds 1 quart. Price, each 60c; postpaid 75c.

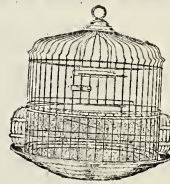


Hudson's Misty—Quarts. Each.....60c



Hudson's Fog—Pints. Each.....50c
 Continuous—Quarts. Each.....85c
 Corono Duster. Each.....\$1.00
 Duster Brown No. 2B—Pints. Each.....\$1.00
 Duster Brown No. 2B—Quarts. Each.....\$2.00
 (Please allow for postage)

Bird Cages



BIRD CAGE STANDS
 CAGE SPRINGS AND BRACKETS
 CUTTLEBONE HOLDERS, ETC.
 SEED CUPS, ETC.



"IT PULLS 'EM OUT BY THE ROOTS. THEY CAN'T COME BACK"—Price \$1.25.

Gold Fish



Gold Fish, each.....15c, 25c to \$1.00
 Fish Moss, per bunch, postpaid.....20c
FISH BOWLS—Write for Prices.
QUARTS — HALF-GALLONS — GALLONS

Paper Pots

(Not prepaid)

Prevent disturbing the roots. Sow seed of Melon, Cucumber and Squash. When seed is up, place pot and all in ground.

Size—	100	1,000
2½ in.	\$1.00	\$7.50
3 in.	1.50	9.50
4 in.	2.50	13.50

Spraying and Dusting

FOR CABBAGE WORMS

Spray or dust with Arsenate of Lead and Soap, or Slugshot.

CELERY AND TOMATO BLIGHT

Spray or dust with Bordeaux Mixture.

CORN EAR WORM

As soon as silk appears, spray with Arsenate of Lead and Sulphur.

VINE CROPS

Spray with Bordeaux Mixture and Arsenate of Lead.

GREEN AND BLACK APHIS

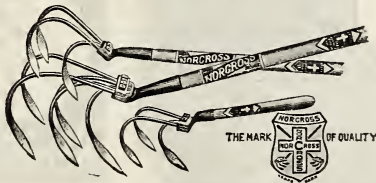
Spray with "Blackleaf 40."

RED SPIDER AND WHITE FLY

—on rose bushes and climbing vines. Spray hard on under side with cold water, but always before noon to avoid mildew.

CARCO WILL PREVENT ROOT MAGGOT!

Norcross Cultivators



5 Prong (5 pounds), each.....\$1.40
 3 Prong (3 pounds), each.....1.00
 Midget65

Tree Pruners

THE TIFFANY—All steel handles, 24-inch. Price, \$3.50 each.

TIFFANY GRAGTING TOOL—Each \$1.50.

CARTRIGHT PRUNER—Wood Handles. Price, \$3.00 each.

CLAY FLOWER POTS

3 inch, each.....\$.05	7 inch, each.....\$.25
4 inch, each..... .08	8 inch, each..... .30
5 inch, each..... .10	10 inch, each..... .70
6 inch, each..... .15	12 inch, each..... 1.10

Saucers, one-half price of pots.

Cel-O-Glass

Cel-O-Glass is sold in rolls 3 feet wide and in any length up to 100 linear feet. Use it for garage and barn doors and windows, cellar windows, storm doors and most any place where you are now using glass.

Price, per roll, 100x3 ft., per square foot.....15c

Richard's Magic Weeder



Style A—Length over all 9½ inches.....20c
 Style B—Length over all 22 inches.....25c
 Style C—Length over all 10 inches.....35c
 Style D—Length over all 11¼ inches.....50c
 Style E—Length over all 11¼ inches.....50c
 Style F—Length over all 42 inches.....75c
 Light and strong. Allow for postage.

Stanley's Bird Repellant

is one sure cure for troublesome birds. Not only birds, but moles, squirrels and all pests will leave your corn fields severely alone if you coat your seed corn with it just before planting. You don't have to wait for it to dry, and it positively will not clog the planter. It is not poisonous and, therefore, will not kill birds or animals, but it WILL keep your cornfields free from damage that runs into money and time, if you have to keep replanting all the time. Large can, enough for 2 bushels of seed corn (8 to 10 acres), \$1.50; half-size can, \$1.00.



Our Montana Peerless Alfalfa on the D. J. Goff & Sons Ranch, Kismet Orchards, Chelan Falls, Wn.

Raffia

In ordering Raffia by mail, be sure to add the postage.

Raffia—Natural color. Price ¼ lb. 20c; postpaid 25c; not postpaid, per lb. 40c.



ODORLESS—CLEAN—EFFICIENT

For Lawns, Gardens, Shrubs, House Plants, Fields and Orchards

BOOK FREE. Tells just how. Sold only in 25-lb. cotton bags, \$2.75; 2 lb. pkgs., 45c.

A 25-lb. bag covers a lawn space of 1,200 square feet. Lasts a year or more. A tablespoonful to a hill of potatoes, tomatoes or ordinary rose bush means abundant flowers, crisp, early vegetables.

A Tablespoonful for 6 to 8-inch potted plants. Positively kills cut worms.

Sheep Manure

The Best Fertilizer for the Lawn and Garden

As a spring or fall top dressing for lawns, it is the best that can be procured. The first shower or watering carries the soluble particles down to the roots, and rapidly produces a most luxuriant growth. For general use apply 50 lbs. to every 100 square feet; 600 to 800 lbs. per acre for lawns. For general field and garden use, 1 ton per acre. Pulverized perfectly fine. Can be distributed as easily as sand.

85 lb. sack.....	\$2.00
50 lb. sack.....	1.50
25 lb. sack.....	.75
10 lb. sack.....	.50
5 lb. sack.....	.25

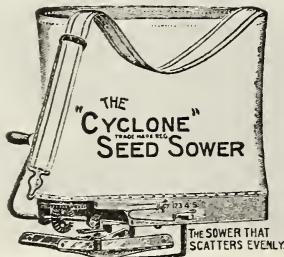
Prices F. O. B. Wenatchee, by express or freight.

STIM-U-PLANT

STIM-U-PLANT TABLETS are an ideal food for potted plants; they are clean; they take up small space, and one-quarter of a tablet is enough to use at a time on small plants.

EASY TO USE

Simply insert in soil near plants, or dissolve in water at the rate of four tablets to the gallon and apply as a liquid manure. 30 tablets, 25c; 100 tablets, 75c; 1,000 tablets, postpaid, \$3.50.



Use it with any seeds that can be sown broadcast. Price, \$2.25; postpaid, \$2.35.

Milot-Mills Golden Roller Bird Seed

One pound (not prepaid).....	20c
Bird Baths, Seed and water Cups, each.....	15c
PHILADELPHIA BIRD SEED AND REMEDIES	
Best Mixed, per lb., postpaid.....	30c
Canary, best re-cleaned, per lb., postpaid.....	20c
Hemp, per lb., postpaid.....	20c
Millet, per lb., postpaid.....	15c
Rape, per lb., postpaid.....	20c
Sunflower Seed, bulk, per lb., postpaid.....	20c
Mexican Salve, per box.....	25c
Mite Powder, per box.....	25c
Moulting Food, per box.....	15c
Nestling Food, per box.....	25c
Nestling Hair, per pkg.....	10c
Bird Manna, per pkg.....	15c
Bird Gravel, per pkg.....	15c
Spratt's Sing Song, per pkg.....	15c
Fish Food, per box.....	10c
Cuttle Bone, each.....	05c
Song Restorer.....	25c
High Balls.....	15c

GEISLER'S BIRD SEED AND REMEDIES

Poultry Food and Remedies

Lee's Germozone (liquid) 4-oz. size 40c; 12-oz. bottle 75c; tablets.....	25c and 75c
White Diarrhoea Remedy, 12-oz. bottle.....	50c
Egg-o-Latum, 2-oz. jar.....	50c
Lee's Louse Power, 1-lb. pkg.....	30c
Lee's Lice Killer, 1-qt. size.....	60c
Lee's Flyo Curo, 1-qt. size.....	60c
Lee's Worm Power, 1-lb. size.....	35c
Lee's Best Conditioner, 2-lb. pkg.....	50c
Head Lice Ointment, 2-oz. cans.....	15c
Lee's Egg Maker, 2-lb. pkg.....	50c
Poultry Pepper, pkg.....	25c

(Add postage)



SPRATT'S DOG FOOD AND REMEDIES

Dog Biscuit, in bulk, 1 lb.....	17c
Puppy Cakes, cartons.....	45c
FIBO, cartons.....	25c-45c
CHARCOAL OVALS, bulk.....	25c
COD LIVER OIL BISCUITS, bulk.....	25c
CAT FOOD, in bulk.....	25c

Soaps, Chains, Leads, Collars and Harness.

FISH OIL SOAP

For Aphid and all insects which suck. This soap dissolved 3 oz. in 1 gallon of warm water is very effective. About 3-4 lb. package, ea. 25c; postpaid, 30c.

Insecticides and Plant Remedies

BORDEAUX MIXTURE

Used principally for Mildew, Blight and Fungus Diseases of all kinds. Half lb. 25c; postpaid. 30c; 1 lb., 40c; postpaid, 45c; 5 lbs., \$1.50.

MAGGOTBATE

For use on all root crops for root maggots. 2 lb. cartons..... 25c

POISON GAS BALLS

Exterminates Ground Squirrels, Pocket Gophers, Prairie Dogs

NON-EXPLOSIVE

No Danger of Killing Stock or Game Birds
Light the ball and drop it in the hole. The burning ball creates a gas heavier than air. It gets the whole family. Each 2½c; 100. \$2.00; 500, \$8.00. Weight, 75 lbs, per 1000.

GRAPE DUST (Hammonds)

Rust or mildew on parsley, muskmelons or other plants. "Grape Dust" is a practical and usually effectual remedy. 5 lb. pkg., \$1.00; postpaid, \$1.15.



A wonderfully effective spray for destroying Grubs, Maggots and Worms which infect TUR-NIPS, RADISHES, BEETS, CAULIFLOWERS, CABBAGE, ONIONS, Etc., and highly recommended for use in combatting CROWN BORERS in strawberries. The root maggot, as well as the strawberry crown borer, is hatched from an egg deposited on the plants by the maggot fly. This fly dislikes the odor of the spray, and will not deposit the eggs where the odor is present. Carco is highly recommended by market gardeners and large growers of vegetables. Is sure death to ants. Half pint, 50c; pint, 75c; quart, \$1.25; gal. \$2.75.

DUSTING SULPHUR

Prevents Mildew, and is a summer dust spray for insects and fungus diseases. Pound 15c; postpaid, 25c.

ARSENATE OF LEAD

Arsenate of Lead—Half lb. pkg., 20c; one lb. 30c.

TOBACCO DUST

For dusting plants affected with Aphis; also used on squash vines and melons. 1 lb., 15c; postpaid, 20c; 5 lbs., 75c; postpaid, 90c.

BLACK LEAF "40"

A Concentrated Solution of Nicotine Solution

For the convenient information of those desiring to use "Black Leaf 40" the following suggestions are made:

Against sucking insects, such as Green and Woolly Aphis, Pear Psylla, Grape Leaf Hopper, Pear Thrips, etc., 1 part "Black Leaf 40" to about 900 to 1000 parts water.

Against more resistant plant lice, such as Black Aphis and Rosy Apple Aphis, 1 part "Black Leaf 40" to about 500 to 700 parts water.

Price, 1 oz. bottle, 35c; half lb. tin, \$1.25; 2 lb. tin, \$3.50; 10 lb. tin, \$13.50. Not mailable.



SLUG SHOT (Hammond's)

A light, non-poisonous composite, fine powder for killing Potato Bugs, Currant and Cabbage Worms, Green and Black Fly, Beetles and Caterpillars. Full directions on each package. 1 lb. perforated box, 25c; postpaid, 30c; 5 lbs., 75c; postpaid, 90c.

Ant Killer, per can..... 50c

FORMULA FOR CUTWORM AND GRASS-HOPPER POISON FOR FIVE ACRES

Paris green (or white arsenic)..... 1 lb.
Molasses (cheap blackstrap preferably)..... 2 qts.
Lemons (or oranges)..... ½ doz.
Water..... 4 gals.
Bran (or alfalfa meal)..... 25 lbs.

Grind lemons with meat grinder, mix all ingredients thoroughly. Spread thinly to avoid danger to livestock.

Best spread in late afternoon. Reduce to suit size of garden.

Semesan Semesan Jr. Semesan Bel

THE PREMIER SEED DISINFECTANTS
Control Diseases. Increase Yields. Improve Quality

SEMESAN—This disinfectant can be applied in either the liquid or convenient dust form to prevent or control effectively a most diversified variety of parasitic diseases and fungoid growths borne by seeds, seed pieces, plants, grafts and soils. Semesan is harmless to seed and plant life but extremely poisonous to disease and fungous organisms. It hastens germination, produces sturdier plants, promotes earlier maturity and increases both the quantity and quality of crop yields.

SEMESAN JR.—A less expensive but equally effective form of Semesan for the dry dust disinfection of both field and sweet corn seeds against the ear, root and stalk rots.

SEMESAN BEL—Applied to whole or cut seed potatoes, either as a dry powder or a whitewash-like water mixture. Semesan Bel will prevent or control the common seed-borne potato diseases.

PRICES FOR DU PONT		SEMESAN JR. AND SEMESAN BEL	
2 ozs.....\$.50	5 lbs.....\$ 13.00	1 lb.....\$ 1.75	
8 ozs..... 1.60	25 lbs..... 62.50	5 lbs..... 8.00	
1 lb..... 2.75	50 lbs..... 122.50	25 lbs..... 37.50	

Free Descriptive Booklet Sent Upon Request

KEEP YOUR LAWN MOWER SHARP



You can do it yourself easily and quickly with a Berghman Lawn Mower Sharpener. It is adjustable and lasts forever. A few strokes on each blade and your mower cuts like new. To keep your lawn mower in shape this summer SEND for this handy sharpener TODAY—

Price \$1.00

Landscape Gardening

We take your place in the rough, grade it, fertilize it, and plant it, making it a picture place. We have everything to plant that goes to make a complete landscape job. This department is at your service, and we are always pleased to call and assist you. Phone 875 for any advice you may need.

MILOT-MILLS LANDSCAPE DEPARTMENT
Greenhouses and Nurseries, 607 to 619 Okanogan Avenue

How to Make a Lawn

If possible, the soil should be prepared a considerable time before the seed is to be sown, the longer the time the better. The best lawn would be obtained by preparing the soil a year before sowing the seed, and working it frequently to destroy the weeds and make the seed bed in perfect condition. Unless this is done you should bear in mind that though no seed of any kind is sown a multitude of weeds and coarse grasses will spring up from the seeds which are in all soils. Sowing grass seed will not prevent these seeds from germinating, so if you have purchased high grade seed, do not condemn your seedsman for weeds that appear in the lawn if the above precautions have not been followed.

Just before sowing the seed a lawn fertilizer should be broadcast and thoroughly worked in, at the rate of about 500 lbs. per acre. The seed should not be sown until the soil is in perfect condition, not only perfectly smooth but finely pulverized on the surface, and in the same condition to the depth of 8 inches or more. If the seed is to be sown during a dry season, the ground should first be thoroughly soaked with water, and then when it is not sticky when pressed by hand, it should be carefully raked.

Seed should be sown when there is no wind blowing and can be sown evenly by sowing very lightly in one direction and then in another until the proper amount of seed is sown. Use plenty of seed, at least 1 lb. of mixed lawn grass seed to each 300 square feet of lawn, and it would be better to sow twice that amount. Do not economize in seed, either in quantity or quality; it is the least expensive part of the lawn. After the seed is sown the careful use of the roller will press all seed into the soil. If the seed is raked in at all, it must be raked very lightly.

Commence mowing as soon as the grass is two inches high, but never cut very short during the first two years' growth. Leave the clippings where they fall. Many lawns are ruined by removing the clippings, as it makes a splendid fertilizer and helps to form a thick turf.

Cut Flower Department

CUT FLOWERS FOR ALL
OCCASIONS

Birthday Gifts, Weddings, Bouquets—\$5.00 up.
Corsages \$1.50 up.
Baskets of Flowers..... \$2.50 to \$10.00
Bouquets for the Sick, Etc..... \$1.50 to \$5.00

We make all kinds of designs and sprays for funerals. Our large greenhouses enables us to have FRESH FLOWERS every day of the year.

Roses, Carnations, Lilies, Chrysanthemums, Tulips, Daffodils, Freesias, and Sweet Peas, in season.

FLOWERS DELIVERED BY WIRE any time and anywhere.

PHONE 875—DAY OR NIGHT.

LAWN GRASS MIXTURE

One Pound to 300 Square Feet

Composed of Blue Grass and White Dutch

Clover Only. Per lb.....	60c
Shady Place Lawn Mixture.....	65c
White Dutch Clover.....	60c
Kentucky Blue Grass.....	50c
Rhode Island Bent.....	\$1.50

The Court House Park Lawn was made from our Lawn Grass Mixture.

The Milot-Mills Company wish to thank their customers for their patronage and good will, which has helped them to build such an institution which they believe is a credit to the whole of North Central Washington. With their 18 years of experience, they feel they are in a position to render inestimable service to both the farmer and gardener, and sincerely hope all will feel free to write them on any subject pertaining to the various branches of their business.